

BigFix
Patch for SUSE Linux Enterprise - User's Guide



Special notice

Before using this information and the product it supports, read the information in [Notices \(on page xciii\)](#).

Edition notice

This edition applies to BigFix version 11 and to all subsequent releases and modifications until otherwise indicated in new editions.

Contents

Special notice.....	ii
Edition notice.....	iii
Chapter 1. Overview.....	6
What's new in this update release.....	6
Supported platforms and updates.....	8
Supported Novell repositories.....	10
Site subscription.....	23
Patching method.....	23
Chapter 2. Using the download plug-in.....	25
Manage Download Plug-ins dashboard overview.....	26
Registering the SCC download plug-in.....	27
Configuring the basic SCC download plug-in settings.....	30
Configuring the advanced SCC download plug-in settings.....	32
Unregistering the SCC download plug-in.....	35
Upgrading the SCC download plug-in.....	36
Extending the SCC download plug-in.....	36
Chapter 3. Using the download cacher.....	43
SCC download cacher usage information.....	43
Using the SCC download cacher for air-gapped environments.....	48
Caching packages on the sha1 folder.....	49
Caching packages on the local cache folder.....	50
Chapter 4. Using BigFix Patch for SUSE Linux Enterprise.....	52
Patching using Fixlets.....	52
Supersedence.....	55
Chapter 5. Multiple-Package Baseline Installation.....	56
Installing multiple packages in a baseline.....	58
Creating a search filter for zypper patches.....	61
Chapter 6. Custom repositories management.....	62
SLE Custom Repository Management dashboard.....	63
Adding a repository or SMT.....	65
Registering endpoints to a repository or SMT.....	66

Unregistering endpoints from a repository or SMT.....	68
Deleting repositories or SMTs.....	68
Importing repositories or SMTs.....	69
Installing packages from a custom repository.....	69
Chapter 7. SLE Btrfs snapshot management.....	71
SLE Btrfs Snapshot Management dashboard overview.....	71
Rolling back a snapshot.....	73
Appendix A. Support.....	74
Appendix B. Troubleshooting.....	75
Appendix C. Frequently asked questions.....	83
Notices.....	xciii

Chapter 1. Overview

The BigFix Patch solution, which includes deploying a multi-purpose, lightweight agent to all endpoint devices, supports a wide variety of device types ranging from workstations and servers to mobile and point-of-sale (POS) devices.

The information in this guide applies to SUSE Linux™ Enterprise Desktop for x86 and x86-64, and SUSE Linux™ Enterprise Server for x86, x86-64, and s390x.

What's new in this update release

This release of BigFix Patch for SUSE Linux™ Enterprise provides extended support to include SUSE Linux Enterprise Server 12 on IBM PowerPC 64-bit Little Endian (LE).

Table 1. What's new

Enhancement or Feature	Description	Resources
SUSE Linux Enterprise Server 11 PPC64BE support	<p>The content for SUSE Linux Enterprise Server 11 on IBM PowerPC 64-bit Big Endian (BE) is published in the Patches for SLE 12 PPC64BE site. This site is SLE's default package manager, and contains content from the following channels for SLES 11 PPC64BE systems:</p> <ul style="list-style-type: none">• SLES11-Pool• SLES11-Updates• SLES11-SP1-Pool• SLES11-SP1-Updates• SLES11-SP2-Pool• SLES11-SP2-Updates• SLES11-SP3-Pool• SLES11-SP3-Updates• SLES11-SP4-Pool• SLES11-SP4-Updates	
SUSE Linux Enterprise Server 12 PPC64LE support	<p>The content for SUSE Linux Enterprise Server 12 on IBM PowerPC 64-bit Little Endian (LE) is published in the Patches for SLE 12 PPC64LE site. This site is SLE's default package manager, and contains content from the following channels for SLES 12 PPC64LE systems:</p> <ul style="list-style-type: none">• SLES12-SP0-Pool• SLES12-SP0-Updates• SLES12-SP1-Pool	<p>Supported platforms and updates (on page 8)</p> <p>Supported Novell repositories (on page 10)</p>

Table 1. What's new (continued)

Enhancement or Feature	Description	Resources
	<ul style="list-style-type: none"> • SLES12-SP1-Updates • SLES12-SP2-Pool • SLES12-SP2-Updates • SLES12-SP3-Pool • SLES12-SP3-Updates 	
	<p>Ensure that you update the SCC download plug-in from the Manage Download Plug-ins dashboard.</p>	

Previous updates

Table 2. Previous updates

Enhancement or Feature	Description	Resources
SCC download plug-in enhancements	<p>The SCC Download Plug-in now has the ability to use packages that are cached by the SCC Download Cacher's <i>download_dir</i> (referred to as localCache in the <code>plugin.ini</code> file) and get packages from the internet at the same time.</p> <p>Previously, the SCC Download Plug-in was used in BigFix server that was in either of the following scenarios:</p> <ul style="list-style-type: none"> • The BigFix Server is fully air-gapped and uses the SCC Download Cacher, or • The BigFix Server is internet-enabled and does not use the SCC Download Cacher <p>With this enhancement, you can cache the packages offline to save time downloading the packages.</p>	<p>Using the download plug-in (on page 25)</p> <p>Configuring the advanced SCC download plug-in settings (on page 32)</p> <p>Using the SCC download cacher for air-gapped environments (on page 48)</p> <p>Caching packages on the sha1 folder (on page 49)</p> <p>Caching packages on the local cache folder (on page 50)</p>
SCC download cacher enhancements	<p>The SCC Download Cacher contains the following enhancements:</p> <ul style="list-style-type: none"> • Package sha1 download support • Repository access check 	<p>Using the download cacher (on page 43)</p>

Table 2. Previous updates (continued)

Enhancement or Feature	Description	Resources
	<ul style="list-style-type: none"> • Storage space requirement check • Space-saving benchmarks 	SCC download cacher usage information (on page 43)
SUSE Linux Enterprise Desktop and Server 12 SP3 content support	<p>The content for SUSE Linux Enterprise Desktop and Server 12 SP3 is published in the Patches for SLE 12 Native Tools site.</p> <p>Ensure that you update the SCC download plug-in from the Manage Download Plug-ins dashboard.</p>	<p>Supported platforms and updates (on page 8)</p> <p>Supported Novell repositories (on page 10)</p>
SUSE Linux Enterprise Server 12 on System z content support	<p>The content for SUSE Linux Enterprise Server 12 on System z is published in the Patches for SLE 12 on System z site.</p> <p>Ensure that you update the SCC download plug-in from the Manage Download Plug-ins dashboard.</p>	<p>Supported platforms and updates (on page 8)</p> <p>Supported Novell repositories (on page 10)</p>

Supported platforms and updates

BigFix Patch supports a wide range of SUSE Linux Enterprise platforms and updates.

BigFix provides Fixlet content for Novell updates that are under general support. If you acquired the Long Term Service Pack Support (LTSS) and require such content, contact HCL Professional Services.

Table 3. Supported platforms and patches for BigFix Patch

Supported platforms and patches are listed below:

Fixlet Site Name	Supported Platform Version	Supported Architecture	Type of Update
Patches for SLE 15	SUSE Linux Enterprise Desktop 15 (SP1, SP2, SP3, SP4)	x86_64	See Supported Novell repositories (on page 10) to view the list of Novell repositories that contain the supported packages.
	SUSE Linux Enterprise Server 15 (SP1, SP2, SP3, SP4)	x86_64	
Patches for SLE 15 on System z	SUSE Linux Enterprise Desktop 15 (SP1, SP2, SP3, SP4)	s390x	

Table 3. Supported platforms and patches for BigFix Patch**Supported platforms and patches are listed below:****(continued)**

Fixlet Site Name	Supported Platform Version	Supported Architecture	Type of Update
	SUSE Linux Enterprise Server 15 (SP1, SP2, SP3, SP4)	s390x	
Patches for SLE 15 PPC64LE	SUSE Linux Enterprise Server 15 (SP1, SP2, SP3, SP4)	ppc64le	
Patches for SLE 12 Native Tools	SUSE Linux Enterprise Desktop 12 (SP1, SP2, SP3, SP4, SP5)	x86_64	
	SUSE Linux Enterprise Server 12 (SP1, SP2, SP3, SP4, SP5)	x86_64	
Patches for SLE 12 on System z	SUSE Linux Enterprise Server 12 (SP1, SP2, SP3, SP4, SP5)	s390x	
Patches for SLE 12 PPC64LE	SUSE Linux Enterprise Server 12 (SP1, SP2, SP3, SP4, SP5)	ppc64le	
Patches for SLE 11 PPC64BE	SUSE Linux Enterprise Server 11 (SP1, SP2, SP3, and SP4)	ppc64be	
Patches for SLE 11 Native Tools	SUSE Linux Enterprise Desktop 11 (SP1, SP2, SP3, and SP4)	x86 and x86_64	
	SUSE Linux Enterprise Server 11 (SP1, SP2, SP3, and SP4)	x86 and x86_64	
Patches for SLE 11 on System z Native Tools	SUSE Linux Enterprise Server 11 (SP1, SP2, SP3, and SP4)	s390x	
Patching Support	Previously listed supported platform versions.	NA	NA

**Notes:**

- The **Patches for SLE11 System Z** site was deprecated on June 31, 2017. This site is being replaced by the **Patches for SLE 11 on System z Native Tools** site. BigFix Patch no longer provide content and support for the **Patches for SLE11 System Z** site beyond the stated date.
- The **Patches for SLE11** site was deprecated on January 31, 2016. BigFix Patch no longer provides content and support for this site. The deprecated site is no longer available on the License Overview dashboard.
- The **Patches for SLE10** and **Patches for SLE10 System Z** sites were deprecated on September 30, 2016. Patch content for any new SUSE updates that are released after the site deprecation date for SUSE Linux Enterprise 10 (x86, x86_64, and s390x) are not supported.

To install the patches for x86, x86_64, and s390x, subscribe to the appropriate sites and register the SCC download plug-in on the BigFix server. For more information about registering the SCC download plug-in, see [Registering the SCC download plug-in \(on page 27\)](#).

BigFix generates Fixlet content based on the SUSE advisories published through the Patch Finder at <https://download.suse.com/patch/finder/>. This source channel also provides advisories through a patch notification mailing list.



Important: BigFix does not generate content for packages that are released without an official patch update announcement through Patch Finder. In cases where you require such content, contact the *HCL Professional Services*.

Supported Novell repositories

BigFix Patch for SUSE Linux Enterprise supports the packages in several Novell repositories.

SUSE Linux™ Enterprise Server and Desktop 15

The following table lists the repositories that contain the supported packages for the **Patches for SLE 15** site.

Table 4. Supported Novell repositories and packages for SUSE Linux™ Enterprise Server and Desktop 15

Operating System and Service Pack Level	Repository Name
SUSE Linux™ Enterprise Desktop 15 SP4	SLE-Product-SLED15-SP4-Pool
	SLE-Product-SLED15-SP4-Updates
	SLE-Module-Basesystem15-SP4-Pool
	SLE-Module-Basesystem15-SP4-Updates

Table 4. Supported Novell repositories and packages for SUSE Linux™ Enterprise Server and Desktop 15 (continued)

Operating System and Service Pack Level	Repository Name
	SLE-Module-Desktop-Applications15-SP4-Pool
	SLE-Module-Desktop-Applications15-SP4-Updates
SUSE Linux™ Enterprise Server 15 SP4	SLE-Product-SLES15-SP4-Pool
	SLE-Product-SLES15-SP4-Updates
	SLE-Module-Basesystem15-SP4-Pool
	SLE-Module-Basesystem15-SP4-Updates
	SLE-Module-Server-Applications15-SP4-Pool
	SLE-Module-Server-Applications15-SP4-Updates
SUSE Linux™ Enterprise Desktop 15 SP3	SLE-Product-SLED15-SP3-Pool
	SLE-Product-SLED15-SP3-Updates
	SLE-Module-Basesystem15-SP3-Pool
	SLE-Module-Basesystem15-SP3-Updates
	SLE-Module-Desktop-Applications15-SP3-Pool
	SLE-Module-Desktop-Applications15-SP3-Updates
SUSE Linux™ Enterprise Server 15 SP3	SLE-Product-SLES15-SP3-Pool
	SLE-Product-SLES15-SP3-Updates
	SLE-Module-Basesystem15-SP3-Pool
	SLE-Module-Basesystem15-SP3-Updates
	SLE-Module-Server-Applications15-SP3-Pool
	SLE-Module-Server-Applications15-SP3-Updates
SUSE Linux™ Enterprise Desktop 15 SP2	SLE-Product-SLED15-SP2-Pool
	SLE-Product-SLED15-SP2-Updates
	SLE-Module-Basesystem15-SP2-Pool
	SLE-Module-Basesystem15-SP2-Updates
	SLE-Module-Desktop-Applications15-SP2-Pool

Table 4. Supported Novell repositories and packages for SUSE Linux™ Enterprise Server and Desktop 15 (continued)

Operating System and Service Pack Level	Repository Name
	SLE-Module-Desktop-Applications15-SP2-Updates
SUSE Linux™ Enterprise Server 15 SP2	SLE-Product-SLES15-SP2-Pool
	SLE-Product-SLES15-SP2-Updates
	SLE-Module-Basesystem15-SP2-Pool
	SLE-Module-Basesystem15-SP2-Updates
	SLE-Module-Server-Applications15-SP2-Pool
	SLE-Module-Server-Applications15-SP2-Updates
SUSE Linux™ Enterprise Desktop 15 SP1	SLE-Product-SLED15-SP1-Pool
	SLE-Product-SLED15-SP1-Updates
	SLE-Module-Basesystem15-SP1-Pool
	SLE-Module-Basesystem15-SP1-Updates
	SLE-Module-Desktop-Applications15-SP1-Pool
	SLE-Module-Desktop-Applications15-SP1-Updates
SUSE Linux™ Enterprise Server 15 SP1	SLE-Product-SLES15-SP1-Pool
	SLE-Product-SLES15-SP1-Updates
	SLE-Module-Basesystem15-SP1-Pool
	SLE-Module-Basesystem15-SP1-Updates
	SLE-Module-Server-Applications15-SP1-Pool
	SLE-Module-Server-Applications15-SP1-Updates
SUSE Linux™ Enterprise Desktop 15	SLE-Module-Basesystem15-Pool
	SLE-Module-Basesystem15-Updates
	SLE-Module-Desktop-Applications15-Pool
	SLE-Module-Desktop-Applications15-Updates

Table 4. Supported Novell repositories and packages for SUSE Linux™ Enterprise Server and Desktop 15 (continued)

Operating System and Service Pack Level	Repository Name
	SLE-Product-SLED15-Pool
	SLE-Product-SLED15-Updates
SUSE Linux™ Enterprise Server 15	SLE-Module-Basesystem15-Pool
	SLE-Module-Basesystem15-Updates
	SLE-Module-Server-Applications15-Pool
	SLE-Module-Server-Applications15-Updates
	SLE-Product-SLES15-Pool
	SLE-Product-SLES15-Updates

SUSE Linux™ Enterprise Server 15 on z systems

The following table lists the repositories that contain the supported packages for the **Patches for SLE 15 on System z** site:

Table 5. Supported Novell repositories and packages for SUSE Linux™ Enterprise Server and Desktop 15

Operating System and Service Pack Level	Repository Name
SUSE Linux™ Enterprise Desktop 15 SP4 on system z	SLE-Product-SLED15-SP4-Pool
	SLE-Product-SLED15-SP4-Updates
	SLE-Module-Basesystem15-SP4-Pool
	SLE-Module-Basesystem15-SP4-Updates
	SLE-Module-Desktop-Applications15-SP4-Pool
	SLE-Module-Desktop-Applications15-SP4-Updates
SUSE Linux™ Enterprise Server 15 SP4 on system z	SLE-Product-SLES15-SP4-Pool
	SLE-Product-SLES15-SP4-Updates
	SLE-Module-Basesystem15-SP4-Pool

Table 5. Supported Novell repositories and packages for SUSE Linux™ Enterprise Server and Desktop 15 (continued)

Operating System and Service Pack Level	Repository Name
	SLE-Module-Basesystem15-SP4-Updates
	SLE-Module-Server-Applications15-SP4-Pool
	SLE-Module-Server-Applications15-SP4-Updates
SUSE Linux™ Enterprise Desktop 15 SP3 on system z	SLE-Product-SLED15-SP3-Pool
	SLE-Product-SLED15-SP3-Updates
	SLE-Module-Basesystem15-SP3-Pool
	SLE-Module-Basesystem15-SP3-Updates
	SLE-Module-Desktop-Applications15-SP3-Pool
	SLE-Module-Desktop-Applications15-SP3-Updates
SUSE Linux™ Enterprise Server 15 SP3 on system z	SLE-Product-SLES15-SP3-Pool
	SLE-Product-SLES15-SP3-Updates
	SLE-Module-Basesystem15-SP3-Pool
	SLE-Module-Basesystem15-SP3-Updates
	SLE-Module-Server-Applications15-SP3-Pool
	SLE-Module-Server-Applications15-SP3-Updates
SUSE Linux™ Enterprise Desktop 15 SP2 on system z	SLE-Product-SLED15-SP2-Pool
	SLE-Product-SLED15-SP2-Updates
	SLE-Module-Basesystem15-SP2-Pool
	SLE-Module-Basesystem15-SP2-Updates
	SLE-Module-Desktop-Applications15-SP2-Pool
	SLE-Module-Desktop-Applications15-SP2-Updates
SUSE Linux™ Enterprise Server 15 SP2 on system z	SLE-Product-SLES15-SP2-Pool
	SLE-Product-SLES15-SP2-Updates
	SLE-Module-Basesystem15-SP2-Pool
	SLE-Module-Basesystem15-SP2-Updates
	SLE-Module-Server-Applications15-SP2-Pool
	SLE-Module-Server-Applications15-SP2-Updates
SUSE Linux™ Enterprise Desktop 15 SP1 on system z	SLE-Product-SLED15-SP1-Pool

Table 5. Supported Novell repositories and packages for SUSE Linux™ Enterprise Server and Desktop 15 (continued)

Operating System and Service Pack Level	Repository Name
	SLE-Product-SLED15-SP1-Updates
	SLE-Module-Basesystem15-SP1-Pool
	SLE-Module-Basesystem15-SP1-Updates
	SLE-Module-Desktop-Applications15-SP1-Pool
	SLE-Module-Desktop-Applications15-SP1-Updates
SUSE Linux™ Enterprise Server 15 SP1 on system z	SLE-Product-SLES15-SP1-Pool
	SLE-Product-SLES15-SP1-Updates
	SLE-Module-Basesystem15-SP1-Pool
	SLE-Module-Basesystem15-SP1-Updates
	SLE-Module-Server-Applications15-SP1-Pool
	SLE-Module-Server-Applications15-SP1-Updates
SUSE Linux™ Enterprise Desktop 15 on system z	SLE-Product-SLED15-Pool
	SLE-Product-SLED15-Updates
	SLE-Module-Basesystem15-Pool
	SLE-Module-Basesystem15-Updates
	SLE-Module-Desktop-Applications15-Pool
	SLE-Module-Desktop-Applications15-Updates
SUSE Linux™ Enterprise Server 15 on system z	SLE-Product-SLES15-SP1-Pool
	SLE-Product-SLES15-SP1-Updates
	SLE-Module-Basesystem15-Pool
	SLE-Module-Basesystem15-Updates
	SLE-Module-Server-Applications15-SP1-Pool
	SLE-Module-Server-Applications15-SP1-Updates

SUSE Linux™ Enterprise Server 15 PPC64LE

The following table lists the repositories that contain the supported packages for the **Patches for SLE 15 PPC64LE site**:

Table 6. Supported Novell repositories and packages for SUSE Linux™ Enterprise Server 15 on PPC64 Little Endian

Operating System and Service Pack Level	Repository Name
SUSE Linux™ Enterprise Server 15 SP4	SLE-Product-SLES15-SP4-Pool
	SLE-Product-SLES15-SP4-Updates
	SLE-Module-Basesystem15-SP4-Pool
	SLE-Module-Basesystem15-SP4-Updates
	SLE-Module-Server-Applications15-SP4-Pool
	SLE-Module-Server-Applications15-SP4-Updates
SUSE Linux™ Enterprise Server 15 SP3	SLE-Product-SLES15-SP3-Pool
	SLE-Product-SLES15-SP3-Updates
	SLE-Module-Basesystem15-SP3-Pool
	SLE-Module-Basesystem15-SP3-Updates
	SLE-Module-Server-Applications15-SP3-Pool
	SLE-Module-Server-Applications15-SP3-Updates
SUSE Linux™ Enterprise Server 15 SP2	SLE-Product-SLES15-SP2-Pool
	SLE-Product-SLES15-SP2-Updates
	SLE-Module-Basesystem15-SP2-Pool
	SLE-Module-Basesystem15-SP2-Updates
	SLE-Module-Server-Applications15-SP2-Pool
	SLE-Module-Server-Applications15-SP2-Updates
SUSE Linux™ Enterprise Server 15 SP1	SLE-Product-SLES15-SP1-Pool
	SLE-Product-SLES15-SP1-Updates
	SLE-Module-Basesystem15-SP1-Pool
	SLE-Module-Basesystem15-SP1-Updates
	SLE-Module-Server-Applications15-SP1-Pool
	SLE-Module-Server-Applications15-SP1-Updates
SUSE Linux™ Enterprise Server 15	SLE-Product-SLES15-Pool
	SLE-Product-SLES15-Updates
	SLE-Module-Basesystem15-Pool

Table 6. Supported Novell repositories and packages for SUSE Linux™ Enterprise Server 15 on PPC64 Little Endian (continued)

Operating System and Service Pack Level	Repository Name
	SLE-Module-Basesystem15-Updates
	SLE-Module-Server-Applications15-Pool
	SLE-Module-Server-Applications15-Updates

SUSE Linux™ Enterprise Server and Desktop 12

The following table lists the repositories that contain the supported packages for the **Patches for SLE 12 Native Tools** site:

Table 7. Supported Novell repositories and packages for SUSE Linux™ Enterprise Server and Desktop 12

Operating System and Service Pack Level	Repository Name
SUSE Linux Enterprise Desktop 12 SP5	SLED12-SP5-Pool
	SLED12-SP5-Updates
SUSE Linux Enterprise Server 12 SP5	SLES12-SP5-Pool
	SLES12-SP5-Updates
SUSE Linux Enterprise Desktop 12 SP4	SLED12-SP4-Pool
	SLED12-SP4-Updates
SUSE Linux Enterprise Server 12 SP4	SLES12-SP4-Pool
	SLES12-SP4-Updates
SUSE Linux™ Enterprise Desktop 12 SP3	SLED12-SP3-Pool
	SLED12-SP3-Updates
SUSE Linux™ Enterprise Server 12 SP3	SLES12-SP3-Pool
	SLES12-SP3-Updates
SUSE Linux™ Enterprise Desktop 12 SP2	SLED12-SP2-Pool
	SLED12-SP2-Updates
SUSE Linux™ Enterprise Server 12 SP2	SLES12-SP2-Pool
	SLES12-SP2-Updates

Table 7. Supported Novell repositories and packages for SUSE Linux™ Enterprise Server and Desktop 12 (continued)

Operating System and Service Pack Level	Repository Name
SUSE Linux™ Enterprise Desktop 12 SP1	SLED12-SP1-Pool SLED12-SP1-Updates
SUSE Linux™ Enterprise Server 12 SP1	SLES12-SP1-Pool SLES12-SP1-Updates
SUSE Linux™ Enterprise Desktop 12	SLED12-Pool SLED12-Updates
SUSE Linux™ Enterprise Server 12	SLES12-Pool SLES12-Updates

SUSE Linux™ Enterprise Server 12 on z systems

The following table lists the repositories that contain the supported packages for the **Patches for SLE 12 on System z** site.

Table 8. Supported Novell repositories and packages for SUSE Linux™ Enterprise Server 12 on System z

Operating System and Service Pack Level	Repository Name
SUSE Linux™ Enterprise Server 12 SP5 on System z	SLES12-SP5-Pool SLES12-SP5-Updates
SUSE Linux™ Enterprise Server 12 SP4 on System z	SLES12-SP4-Pool SLES12-SP4-Updates
SUSE Linux™ Enterprise Server 12 SP3 on System z	SLES12-SP3-Pool SLES12-SP3-Updates
SUSE Linux™ Enterprise Server 12 SP2 on System z	SLES12-SP2-Pool SLES12-SP2-Updates
SUSE Linux™ Enterprise Server 12 SP1 on System z	SLES12-SP1-Pool SLES12-SP1-Updates

Table 8. Supported Novell repositories and packages for SUSE Linux™ Enterprise Server 12 on System z (continued)

Operating System and Service Pack Level	Repository Name
SUSE Linux™ Enterprise Server 12 on System z	SLES12-Pool
	SLES12-Updates

SUSE Linux™ Enterprise Server 12 PPC64LE

The following table lists the repositories that contain the supported packages for the **Patches for SLE 12 PPC64LE** site.

Table 9. Supported Novell repositories and packages for SUSE Linux™ Enterprise Server 12 on PPC64 Little Endian

Operating System and Service Pack Level	Repository Name
SUSE Linux™ Enterprise Server 12 SP5	SLES12-SP5-Pool
	SLES12-SP5-Updates
SUSE Linux™ Enterprise Server 12 SP4	SLES12-SP4-Pool
	SLES12-SP4-Updates
SUSE Linux™ Enterprise Server 12 SP3	SLES12-SP3-Pool
	SLES12-SP3-Updates
SUSE Linux™ Enterprise Server 12 SP2	SLES12-SP2-Pool
	SLES12-SP2-Updates
SUSE Linux™ Enterprise Server 12 SP1	SLES12-SP1-Pool
	SLES12-SP1-Updates
SUSE Linux™ Enterprise Server 12	SLES12-SP0-Pool
	SLES12-SP0-Updates

SUSE Linux™ Enterprise Server and Desktop 11

The following table lists the repositories that contain the supported packages for the **Patches for SLE 11 Native Tools** site.

Table 10. Supported Novell repositories and packages for SUSE Linux™ Enterprise Server and Desktop 11

Operating System and Service Pack Level	Repository Name
SUSE Linux™ Enterprise Desktop 11 SP4	SLED11-SP4-Pool SLED11-SP4-Updates
SUSE Linux™ Enterprise Server 11 SP4	SLES11-SP4-Pool SLES11-SP4-Updates SLE11-Public-Cloud-Module SLE11-Security-Module
SUSE Linux™ Enterprise Desktop 11 SP3	SLED11-SP3-Pool SLED11-SP3-Updates
SUSE Linux™ Enterprise Server 11 SP3	SLES11-SP3-Pool SLES11-SP3-Updates SLE11-Public-Cloud-Module SLE11-Security-Module
SUSE Linux™ Enterprise Desktop 11 SP2	SLED11-SP1-Pool SLED11-SP1-Updates SLED11-SP2-Core SLED11-SP2-Updates
SUSE Linux™ Enterprise Server 11 SP2	SLES11-SP1-Pool SLES11-SP1-Updates SLES11-SP2-Core SLES11-SP2-Updates
SUSE Linux™ Enterprise Desktop 11 SP1	SLED11-SP1-Pool SLED11-SP1-Updates
SUSE Linux™ Enterprise Server 11 SP1	SLES11-SP1-Pool SLES11-SP1-Updates
SUSE Linux™ Enterprise Desktop 11	SLED11-Pool SLED11-Updates SLED11-Extras

Table 10. Supported Novell repositories and packages for SUSE Linux™ Enterprise Server and Desktop 11 (continued)

Operating System and Service Pack Level	Repository Name
SUSE Linux™ Enterprise Server 11	SLES11-Pool
	SLES11-Updates
	SLES11-Extras

SUSE Linux™ Enterprise Server 11 on z systems

The following table lists the repositories that contain the supported packages for the **Patches for SLE 11 on System z Native Tools** site.

Table 11. Supported Novell repositories and packages for SUSE Linux™ Enterprise Server 11 on System z

Operating System and Service Pack Level	Repository Name
SUSE Linux™ Enterprise Server 11 SP4 on System z	SLES11-SP4-Pool
	SLES11-SP4-Updates
	SLE11-Public-Cloud-Module
	SLE11-Security-Module
SUSE Linux™ Enterprise Server 11 SP3 on System z	SLES11-SP3-Pool
	SLES11-SP3-Updates
	SLE11-Public-Cloud-Module
	SLE11-Security-Module
SUSE Linux™ Enterprise Server 11 SP2 on System z	SLES11-SP2-Core
	SLES11-SP2-Updates
SUSE Linux™ Enterprise Server 11 SP1 on System z	SLES11-SP1-Pool
	SLES11-SP1-Updates
SUSE Linux™ Enterprise Server 11 on System z	SLES11-Pool
	SLES11-Updates
	SLES11-Extras



Note: There are cases where packages are made publicly available in the repositories without an associated Novell advisory. In such cases, no Fixlets are provided by BigFix.

SUSE Linux™ Enterprise Server 11

The following table lists the repositories that contain the supported packages for the **Patches for SLE 11 PPC64BE** site.

Table 12. Supported Novell repositories and packages for SUSE Linux™ Enterprise Server 11 on PPC64 Big Endian

Operating System and Service Pack Level	Repository Name
SUSE Linux™ Enterprise Server 11 SP4	SLE11-Public-Cloud-Module
	SLE11-Security-Module
	SLE11-Extras
	SLE11-SP4-Pool
	SLE11-SP4-Updates
SUSE Linux™ Enterprise Server 11 SP3	SLE11-Public-Cloud-Module
	SLE11-Security-Module
	SLE11-Extras
	SLE11-SP1-Pool
	SLE11-SP1-Updates
	SLE11-Extras
	SLE11-SP2-Core
	SLES11-SP2-Updates
	SLE11-SP3-Pool
	SLE11-SP3-Updates
SUSE Linux™ Enterprise Server 11 SP2	SLE11-Extras
	SLE11-SP1-Pool
	SLES11-SP1-Updates
	SLE11-SP2-Core
	SLE11-SP2-Updates
SUSE Linux™ Enterprise Server 11 SP1	SLES11-Pool
	SLES11-SP1-Pool
	SLES11-SP1-Updates
SUSE Linux™ Enterprise Server 11	SLES11-Pool
	SLES11-Updates

Table 12. Supported Novell repositories and packages for SUSE Linux™ Enterprise Server 11 on PPC64 Big Endian (continued)

Operating System and Service Pack Level	Repository Name
SLE11-Extras	
SLE11-SP1-Pool	

Site subscription

Sites are collections of Fixlet messages that are created internally by you, by HCL, or by vendors.

Subscribe to a site to access the Fixlet messages to patch systems in your deployment.

You can add a site subscription by acquiring a Masthead file from a vendor or from HCL or by using the Licensing Dashboard. For more information about subscribing to Fixlet sites, see the *BigFix Installation Guide*.

For more information about sites, see the *BigFix Console Operator's Guide*.

Patching method

BigFix offers more flexibility to the patch management solution by using native tools.

The Fixlets for all SUSE content use zypper, the default package manager for SUSE Linux Enterprise. Zypper gives you more flexibility in terms of patch deployment and in providing results that are suitable for SUSE Linux Enterprise solutions. It uses a command-line interface and simplifies the process of installing, uninstalling, updating, and querying software packages. It is based on ZYpp, also known as libzypp. For more information about Zypper, see the documentation at <http://www.suse.com> or see the Novell Support website at <https://www.novell.com/support/>.

Zypper reduces dependency issues, improves performance, and is more reliable in terms of installing security patches. This method also allows you to use custom repositories for patching. For more information about custom repository support, see [Custom repositories management \(on page 62\)](#).

The Zypper approach is introduced to replace the EDR utilities that Patch Management for SUSE Linux Enterprise previously used. The following native tools sites are available for you to use:

- **Patches for SLE 15**
- **Patches for SLE 15 on System z**
- **Patches for SLE 15 PPC64LE**
- **Patches for SLE 12 Native Tools**
- **Patches for SLE 12 on System z**
- **Patches for SLE 12 PPC64LE**
- **Patches for SLE 11 Native Tools**
- **Patches for SLE 11 on System z Native Tools**

Zypper utility configuration settings

The native tools sites use all the settings in `/etc/zypp/zypp.conf`.

The following Zypper configuration settings are set to values that come from another file, which is dynamically created during Fixlet execution:

- `cachedir`
- `configdir`
- `metadatadir`
- `packagesdir`
- `reposdir`
- `repo.add.probe`
- `repo.refresh.delay`
- `solvfilesdir`

Identifying file relevance with Native tools content

The native tools captures file relevance in the same way as EDR. Both methods check for the relevance clause `exist lower version of a package, but not exist higher version of it`. If both tools are applied to the same deployment, the relevance results are the same.

Chapter 2. Using the download plug-in

The download plug-in is an executable program that downloads relevant packages directly from the patch vendor. Fixlets use an internal protocol to communicate with the download plug-in to download files. These Fixlets are based on updates made by the vendor.

For the Fixlet to be able to use the protocol, register the download plug-in on the BigFix server. Use the Manage Download Plug-ins dashboard to register the appropriate plug-in.



Notes:

- Download plug-ins support basic authentication only.
- The BigFix server and the BigFix client must be on the same version to avoid a null error.

To install SUSE patches for x86, x86_64, and s390x endpoints, you must register the SUSE Customer Center (SCC) download plug-in on the BigFix server. For more information, see [Registering the SCC download plug-in \(on page 27\)](#). The SCC download plug-in is required for the SUSE Linux Enterprise Fixlet sites.

The SCC download plug-in uses SCC to download and cache patches from a vendor's website to the BigFix server. It does not parse data from the vendor website, therefore removing its dependency on the vendor's errata page format. It retrieves package data directly from the vendor, which improves the accuracy and reliability of package dependency resolution and repository support.



Note: The SCC download plug-in does not work when the **Require SHA-256 Downloads** option in the BigFix Administration tool is enabled. When this option is enabled, all download verification use only the SHA-256 algorithm. However, there are certain SUSE repository metadata from the vendor, which do not contain SHA-256 values for packages in the repository that are used by the plug-in.

Consider disabling the **Require SHA-256 Downloads** option to successfully deploy a patch. Security and package integrity is not compromised as another layer of checking and verification is done using the GPG signature of the package. For more information about the download option, see BigFix Platform Installation Guide at https://help.hcltechsw.com/bigfix/10.0/platform/Platform/Installation/c_security_settings.html.

The download plug-in is highly extensible and robust, enabling such possibilities:

- Customize available repositories through a user extensible repository list.
- Installation and dependency resolution can easily be extended to all repositories, not just those that are shipped out of the box.
- Functionalities can easily be extended by customers and service teams.
- Eliminates dependencies on utilities such as bzip2, expect, and similar.

It improves performance related to downloading large numbers of packages, which consequently shortens the turnaround time for patching.

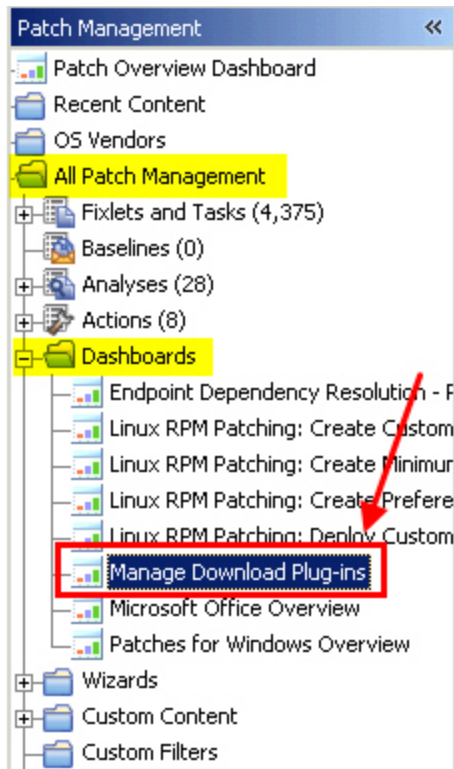
Manage Download Plug-ins dashboard overview

Use the Manage Download Plug-ins dashboard to oversee and manage download plug-ins in your deployment.

You can use the Manage Download Plug-ins dashboard to register, unregister, configure, and upgrade the download plug-ins for different patch vendors.

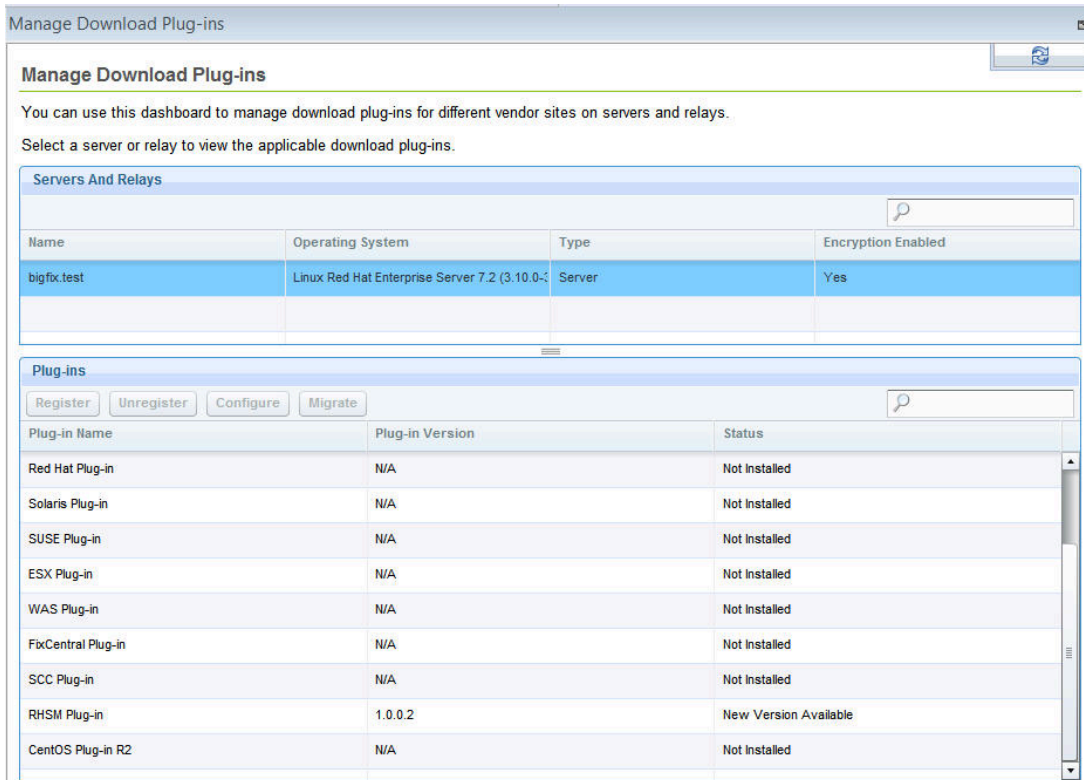
You must subscribe to the Patching Support site to gain access to this dashboard. To view the Manage Download Plug-ins dashboard, go to **Patch Management domain > All Patch Management > Dashboards > Manage Download Plug-ins**.

Figure 1. Patch Management navigation tree



The dashboard displays all the servers and windows-only relays in your deployment. Select a server or relay to view all the plug-ins for that computer. The dashboard shows you also the version and status for each plug-in in one consolidated view.

Figure 2. Manage Download Plug-ins dashboard



Manage Download Plug-ins

You can use this dashboard to manage download plug-ins for different vendor sites on servers and relays.
Select a server or relay to view the applicable download plug-ins.

Servers And Relays

Name	Operating System	Type	Encryption Enabled
bigfix.test	Linux Red Hat Enterprise Server 7.2 (3.10.0-)	Server	Yes

Plug-ins

Register Unregister Configure Migrate

Plug-in Name	Plug-in Version	Status
Red Hat Plug-in	N/A	Not Installed
Solaris Plug-in	N/A	Not Installed
SUSE Plug-in	N/A	Not Installed
ESX Plug-in	N/A	Not Installed
WAS Plug-in	N/A	Not Installed
FixCentral Plug-in	N/A	Not Installed
SCC Plug-in	N/A	Not Installed
RHSM Plug-in	1.0.0.2	New Version Available
CentOS Plug-in R2	N/A	Not Installed

A plug-in can be in one of the following states:

- Not Installed
- New Version Available
- Up-To-Date
- Not Supported

The dashboard has a live keyword search capability. You can search based on the naming convention of the servers, relays, and plug-ins.



Note: If you install the download plug-in on BigFix relays, you must also install it on the BigFix server to avoid download issues.

Registering the SCC download plug-in

Use the Manage Download Plug-ins dashboard to register the SCC download plug-in on the BigFix server to install SUSE patches on x86, x86_64, and s390x endpoints.

You must complete the following tasks:

- Ensure that the BigFix server and the BigFix client are on the same version to avoid a null error.
 - Ensure that the **Require SHA-256 Downloads** option in the BigFix Administration Tool is not enabled to prevent the SCC Plug-in from failing. For more information about the SCC Plug-in, see [Using the download plug-in \(on page 25\)](#).
 - For Linux BigFix servers, install the following packages and their dependencies:
 - GLIBC version 2.2.5 or later
 - GLIBC version 2.3 or later
 - GNU/Linux kernel version 2.6.31 or later
 - Enable HTTPS access on the following URLs on port 443.
 - `https://scc.suse.com:443`
 - `https://updates.suse.com:443`
 - Subscribe to the **Patching Support** site to gain access to the Manage Download Plug-ins dashboard.
 - Activate the **Encryption Analysis for Clients** analysis, which is available from the **BES Support** site.
 - Activate the **Download Plug-in Versions** analysis, which is available from the **Patching Support** site.
 - If you want to encrypt endpoints, deploy the **Enable Encryption for Clients** Fixlet, which is available from the **BES Support** site.
1. From the Patch Management domain, click **All Patch Management > Dashboards > Manage Download Plug-ins dashboard**.
 2. From the Servers and Relays table, select the server on which the download plug-in is to be registered.



Important: You must always register the download plug-in on the BigFix server.

3. From the Plug-ins table, select **SCC Plug-in**.
4. Click **Register**.
The Register SCC Plug-in wizard displays.

Figure 3. Register SCC download plug-in wizard

Register SCC Plug-in

This wizard installs and configures the SCC Plug-in.
Existing configurations are overwritten.
Note: Mirror credentials are required to access SLE 11 and 12 content.

Mirror Server Settings

Note: Obtain your mirror credentials (organization credentials) from SUSE Customer Center. For details, click [here](#).

Mirror Username *

Mirror Password *

Confirm Mirror Password *

Proxy Server Settings

Proxy URL

Proxy Username

Proxy Password

Confirm Proxy Password

OK Cancel

5. Enter your SUSE Customer Care mirror credentials to download the patches from the mirrors of the supported repositories.

! Important:

The mirror credentials refer to the **Organization Credentials** listed in the SUSE Customer Center or Novell Customer Center. For more details, see [Mirroring Credentials](#).

Mirror Username

Your organization user name to access the mirror of the supported SUSE repositories.

Mirror Password

Your organization password to access the mirror of the supported SUSE repositories.

Confirm Mirror Password

Your mirror password for confirmation.

6. Enter the proxy parameters if the downloads must go through a proxy server.



Note: Only basic authentication is supported. Ensure that the proxy is configured to work with the Transport Layer Security (TLS) protocol.

Proxy URL

The URL of your proxy server. It must be a well-formed URL that contains a protocol and a host name. The URL is usually the IP address or DNS name of your proxy server and its port, which is separated by a colon. For example: `http://192.168.100.10:8080`.

Proxy Username

Your proxy user name if your proxy server requires authentication. It is usually in the form of `domain\username`.

Proxy Password

Your proxy password if your proxy server requires authentication.

Confirm Proxy Password

Your proxy password for confirmation.

7. Click **OK**.
The Take Action dialog displays.
8. Select the target computer.
9. Click **OK**.

You successfully registered the SCC download plug-in. The `plugin.ini` configuration file is created in the following locations:

On Windows systems

```
%PROGRAM FILES%\BigFix Enterprise\BES Server\DownloadPlugins\SCCProtocol
```

On Linux systems

```
/var/opt/BEServer/DownloadPlugins/SCCProtocol
```

Configuring the basic SCC download plug-in settings

Use the Manage Download Plug-ins dashboard to configure the basic properties, such as mirroring and proxy settings, of the SUSE Customer Center (SCC) download plug-in.



Note: Ensure that the BigFix server and the BigFix client are on the same version to avoid a null error.

The scope of this task only covers the basic SCC plug-in configuration from the BigFix console. To configure the advanced settings for the SCC plug-in, you must edit the `plugin.ini` file. For details about how to do this, see [SCC download plug-in advanced configuration \(on page 32\)](#).

You might want to take note of your existing configuration for the download plug-in. Existing configurations are overwritten when you configure the download plug-in.

1. From the Patch Management domain, click **All Patch Management > Dashboards > Manage Download Plug-ins dashboard**.
2. From the Servers and Relays table, select the server on which the download plug-in is to be configured.
3. From the Plug-ins table, select **SCC Plug-in**.
4. Click **Configure**.

The Configure SCC Plug-in wizard displays.

Figure 4. Configure SCC download plug-in wizard

Configure SCC Plug-in

This wizard installs and configures the SCC Plug-in.
Existing configurations are overwritten.
Note: Mirror credentials are required to access SLE 11 and 12 content.

Mirror Server Settings

Note: Obtain your mirror credentials (organization credentials) from SUSE Customer Center. For details, click [here](#).

Mirror Username *

Mirror Password *

Confirm Mirror Password *

Proxy Server Settings

Proxy URL

Proxy Username

Proxy Password

Confirm Proxy Password

OK **Cancel**

5. Enter your SUSE Customer Care mirror credentials to download the patches from the mirrors of the supported repositories.

 **Important:**

The mirror credentials refer to the **Organization Credentials** listed in the SUSE Customer Center or Novell Customer Center. For more details, see [Mirroring Credentials](#).

Mirror Username

Your user name to access the mirror of the supported SUSE repositories.

Mirror Password

Your password to access the mirror of the supported SUSE repositories.

Confirm Mirror Password

Your mirror password for confirmation.

6. Enter the proxy parameters if the downloads must go through a proxy server.



Note: Only basic authentication is supported. Ensure that the proxy is configured to work with the Transport Layer Security (TLS) protocol.

Proxy URL

The URL of your proxy server. It must be a well-formed URL that contains a protocol and a host name. The URL is usually the IP address or DNS name of your proxy server and its port, which is separated by a colon. For example: `http://192.168.100.10:8080`.

Proxy Username

Your proxy user name if your proxy server requires authentication. It is usually in the form of `domain\username`.

Proxy Password

Your proxy password if your proxy server requires authentication.

Confirm Proxy Password

Your proxy password for confirmation.

7. Click **OK**.
The Take Action dialog displays.
8. Select the target computer.
9. Click **OK**.

You successfully configured the SCC download plug-in.

Configuring the advanced SCC download plug-in settings

For advanced configurations, manually edit the SCC download plug-in configuration file called `plugin.ini`.

The `plugin.ini` file is automatically created when the download plug-in is registered from the Manage Download Plug-in dashboard. It contains the settings for logging and caching, as well as custom configurations for extending the repository list file.

On Linux systems, the file is in the root directory tree occupied by the download plug-in. For example, `/var/opt/BESServer/DownloadPlugins/SCCProtocol`.

On Windows systems, the file is in the BigFix server installation directory. For example, `%PROGRAM FILES%\BigFix Enterprise\BES Server\DownloadPlugins\SCCProtocol`.

Figure 5. Example of the SCC download plug-in configuration file

```
[Logger]
file = logs/SCCPlugin.log
level = INFO

[UA]
mirrorUsername      = 1234
mirrorPassword     = NTY30A==

proxy              =
proxyUser          =
proxyPass          =

primaryRepoListFile = C:\Program Files (x86)\BigFix Enterprise\BES Server\
                    GatherDBData\gather\Patching Support\CurrentSiteData\DLSuSERepoList.json

extendedRepoListFile =
onlyUseExtendedRepoListFile = no

localCache =
localCacheOnly = no
```



Note: The `plugin.ini` is divided into sections, which are denoted by square brackets. Ensure that the options are under the correct sections. Moving the options to a different section might result in errors.

Either an absolute path or relative path can be used in the options that require a path: `file`, `primaryRepoListFile`, `extendedRepoListFile`, and `localCache`. Relative paths are relative to the download plug-in executable directory. By default, the executable file is in the `DownloadPlugins\SCCProtocol` folder.

Setting the logging level

The logging level determines the amount of detail that is written to the `SCCPlugin.log` file.

The available logging levels are as follows:

ERROR

Contains errors related to the execution of the download plug-in, which might indicate an impending fatal error.

WARNING

Contains information about failed downloads, and reasons for failure.

INFO

Contains general information outlining the progress and successful downloads, with minimal tracing information.

DEBUG

Contains fine-grained information used for troubleshooting issues. This is the most verbose level available.

You can change the logging level option from the `[Logger]` section of the `plugin.ini` file.

```
[Logger]
file = logs/SCCPlugin.log
level = INFO
```

For example, if the logging is set to INFO, the logger outputs any logs for that level and any level above it. In this case, it outputs the INFO, WARNING, and ERROR logs.



Note: Setting the logging level to DEBUG increases the amount of information to log, which might impact performance. Only increase the logging level to DEBUG when investigating an issue, and switch back to INFO or WARNING after the issue is resolved.

Adding an extended repository list file

The SCC download plug-in can be configured to work with repositories that are not officially supported by BigFix, such as LTSS content, if required.

For more information about configuring the download plug-in to support such repositories, see [Extending the SCC download plug-in \(on page 36\)](#).

Setting the download cache

You can use the download cacher tool to download the packages and metadata to a location that you specify.

Sha1 download capability on air-gapped environments

The download cacher tool is mainly designed to be used for air-gapped environments, which require secure networks and therefore do not have access to the internet to download the files directly from the vendor site.

The sha1 download capability improves performance by caching the packages directly on the BigFix server's sha1 folder.

For information, see [Using the SCC download cacher for air-gapped environments \(on page 48\)](#).

Sha1 download capability on an internet-enabled BigFix server

This method is considered best practice for caching packages on environments with a BigFix server that is internet-enabled. The sha1 download capability improves performance by caching the packages directly on the BigFix server's sha1 folder.

For information, see [Caching packages on the sha1 folder \(on page 49\)](#).

Without the sha1 download capability on an internet-enabled BigFix server

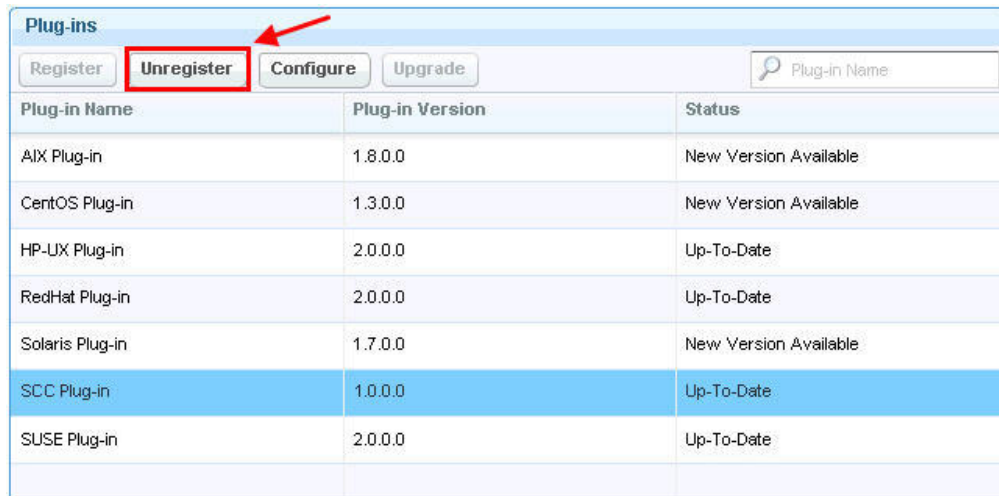
If for some reason you choose not to use the sha1 download capability to cache packages on the BigFix server's sha1 folder, you can use the local cache. For information, see [Caching packages on the local cache folder \(on page 50\)](#).

Unregistering the SCC download plug-in

Use the Manage Download Plug-ins dashboard to unregister the SCC download plug-in.

1. From the Patch Management domain, click **All Patch Management > Dashboards > Manage Download Plug-ins dashboard**.
2. From the Servers and Relays table, select the server on which the download plug-in is to be unregistered.
3. From the Plug-ins table, select **SCC Plug-in**.
4. Click **Unregister**.

Figure 6. Unregister the SCC download plug-in



Plug-ins		
Register	Unregister	Configure Upgrade
<input type="text" value="Plug-in Name"/>		
Plug-in Name	Plug-in Version	Status
AIX Plug-in	1.8.0.0	New Version Available
CentOS Plug-in	1.3.0.0	New Version Available
HP-LX Plug-in	2.0.0.0	Up-To-Date
RedHat Plug-in	2.0.0.0	Up-To-Date
Solaris Plug-in	1.7.0.0	New Version Available
SCC Plug-in	1.0.0.0	Up-To-Date
SUSE Plug-in	2.0.0.0	Up-To-Date

The Take Action dialog displays.

5. Select the target computer.
6. Click **OK**.

You successfully unregistered the SCC download plug-in.

Upgrading the SCC download plug-in

Use the Manage Download Plug-ins dashboard to upgrade the SCC download plug-in to the latest version available.

1. From the Patch Management domain, click **All Patch Management > Dashboards > Manage Download Plug-ins dashboard**.
2. From the Servers and Relays table, select the server on which the download plug-in is to be upgraded.
3. From the Plug-ins table, select **SCC Plug-in**.
4. Click **Upgrade**.
The Take Action dialog displays.
5. Select the target computer.
6. Click **OK**.



Note: It is mandatory to re-configure the Download Plug-ins.



Note: The latest versions of Download Plug-ins are enhanced to strengthen the security of storing Proxy Password and Vendor Password.

You now have the latest version of the SCC download plug-in installed.

Extending the SCC download plug-in

You can configure the SCC download plug-in to download and cache packages from repositories that are not officially supported by BigFix. The SCC download plug-in can resolve package dependency for unsupported SUSE repositories, allowing the installation of unsupported dependent packages. This allows you to use BigFix to deploy packages from repositories that are not shipped out of the box, such as Long Term Service Pack Support (LTSS) or debuginfo repositories.

Before you begin, you must complete the following tasks:

- Ensure that appropriate licenses are registered and that your SUSE subscription is active.
- Review the BigFix Patch for SUSE support information and verify the list of supported repositories:
 - [Supported platforms and updates \(on page 8\)](#)
 - [Supported Novell repositories \(on page 10\)](#)

Creating an extended repository list file

The SCC download plug-in can use an extended repository list file, which contains additional repositories for both base and extension products that are included in your subscription.

The extended repository list file must meet the following criteria:

- It must be a valid `.json` file.
- It must be accessible to the SCC download plug-in. Ensure that the Administrator or root user can read the file.
- It must contain the following format:

```
{
  "<OS_key>": [
    {"name": "<name>", "distro_target": "<distro_target>"},
    {"name": "<name>", "distro_target": "<distro_target>"},
  ],
  "<OS_key_1>": [
    {"name": "<name>", "distro_target": "<distro_target>"},
  ]
}
```



Note: It uses the same format as the `DLSuSERepoList.json` file, which is set for `repoListFile` in the `plugin.ini` file.

You must replace the placeholders, which are enclosed in angle brackets `<>`, with the actual values.

OS_key

To use the unsupported repositories with the BigFix SUSE Patching content, use the following OS keys as listed in the `DLSuSERepoList.json` file:

- sles-12-x86_64-sp3
- sled-12-x86_64-sp3
- sles-12-x86_64-sp2
- sled-12-x86_64-sp2
- sles-12-x86_64-sp1
- sled-12-x86_64-sp1
- sles-12-x86_64-sp0
- sled-12-x86_64-sp0
- sles-12-s390x-sp3
- sles-12-s390x-sp2
- sles-12-s390x-sp1
- sles-12-s390x-sp0
- sles-12-ppc64le-sp0
- sles-12-ppc64le-sp1
- sles-12-ppc64le-sp2
- sles-12-ppc64le-sp3
- sles-11-x86_64-sp4

- sles-11-x86-sp4
- sled-11-x86_64-sp4
- sled-11-x86-sp4
- sles-11-x86_64-sp3
- sles-11-x86-sp3
- sled-11-x86_64-sp3
- sled-11-x86-sp3
- sles-11-x86_64-sp2
- sles-11-x86-sp2
- sled-11-x86_64-sp2
- sled-11-x86-sp2
- sles-11-x86_64-sp1
- sles-11-x86-sp1
- sled-11-x86_64-sp1
- sled-11-x86-sp1
- sles-11-x86_64-sp0
- sles-11-x86-sp0
- sled-11-x86_64-sp0
- sled-11-x86-sp0

- sles-11-s390x-sp4
- sles-11-s390x-sp3
- sles-11-s390x-sp2
- sles-11-s390x-sp1
- sles-11-s390x-sp0

This might not be the full list as later versions of the download plug-in are released. To get the latest and complete copy of the repository list, complete the following actions:

1. Check whether your endpoints are registered to the latest download plug-in. The Manage Download Plug-ins dashboard indicates when the plug-in is up-to-date or when a new version is available.
2. View the `DLSuSERepoList.json` file from the following locations:

On Windows Systems

```
%PROGRAM FILES%\BigFix Enterprise\BES Server\GatherDBData  
gather\Patching Support\CurrentSiteData
```

On Linux Systems

```
/var/opt/BEServer/gatherDBData/gather/Patching Support/  
CurrentSiteData
```

! **Important:** Use the correct OS key for each repository to avoid download and dependency resolution issues.

name

You can retrieve the name from the SUSE Customer Center, see [Retrieving the repository information \(on page 39\)](#).

distro_target

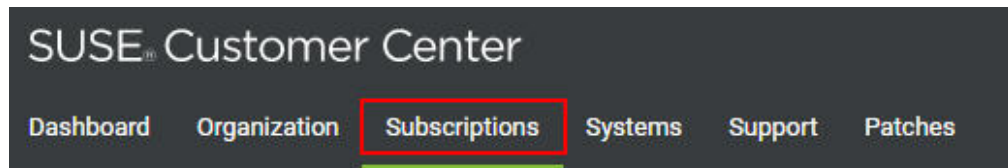
You can retrieve the distribution target name from the SUSE Customer Center, see [Retrieving the repository information \(on page 39\)](#).

Retrieving the repository information

To retrieve repository information from the SUSE Customer Center, complete the following steps:

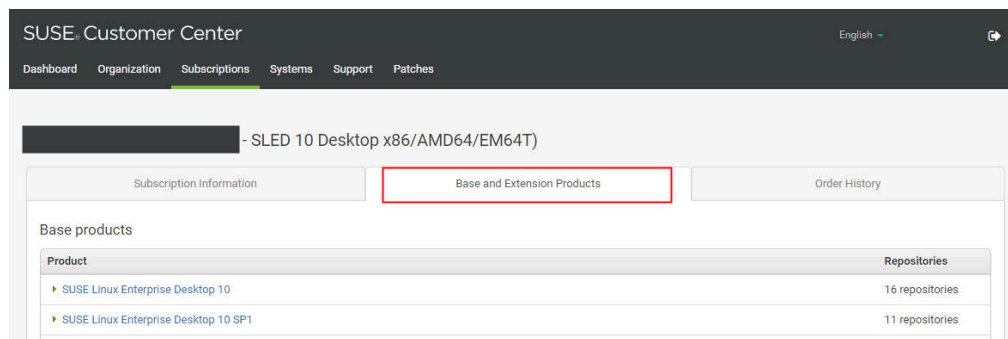
1. Log in to the SUSE Customer Center at <https://scc.suse.com>.
2. Click the **Subscriptions** tab.

Figure 7. Subscriptions



3. Click the appropriate subscription. The Subscription Information page is displayed.
4. Click the **Base and Extension Products** tab.

Figure 8. Base and Extension Products



5. Click the appropriate product name to view a list of repositories for the selected product.

📌 Note: Do not use the repository names listed in the following screen as the value for the name key in the extended repository list.

Figure 9. SUSE Repository List

Repository Name	Repository Base URL	42 repositories
<ul style="list-style-type: none"> ▶ SUSE Linux Enterprise Server 11 SP3 <ul style="list-style-type: none"> SLE11-Public-Cloud-Module (x86_64) SLE11-Public-Cloud-Module (x86_64) SLE11-SP1-Debuginfo-Pool (i386) SLE11-SP1-Debuginfo-Pool (x86_64) SLE11-SP1-Debuginfo-Updates (i386) SLE11-SP1-Debuginfo-Updates (x86_64) SLE11-SP2-Debuginfo-Core (i386) ▶ SUSE Linux Enterprise Server 12 <ul style="list-style-type: none"> SLES12-Debuginfo-Pool (x86_64) SLES12-Debuginfo-Updates (x86_64) SLES12-Pool (x86_64) SLES12-Updates (x86_64) 	<ul style="list-style-type: none"> https://updates.suse.com/repo/\$RCE/SLE11-Public-Cloud-Module/sle-11-i586 https://updates.suse.com/repo/\$RCE/SLE11-Public-Cloud-Module/sle-11-x86_64 https://updates.suse.com/repo/\$RCE/SLE11-SP1-Debuginfo-Pool/sle-11-i586 https://updates.suse.com/repo/\$RCE/SLE11-SP1-Debuginfo-Pool/sle-11-x86_64 https://updates.suse.com/repo/\$RCE/SLE11-SP1-Debuginfo-Updates/sle-11-i586 https://updates.suse.com/repo/\$RCE/SLE11-SP1-Debuginfo-Updates/sle-11-x86_64 https://updates.suse.com/repo/\$RCE/SLE11-SP2-Debuginfo-Core/sle-11-i586 https://updates.suse.com/SUSE/Products/SLE-SERVER/12/x86_64/product_debug https://updates.suse.com/SUSE/Updates/SLE-SERVER/12/x86_64/update_debug https://updates.suse.com/SUSE/Products/SLE-SERVER/12/x86_64/product https://updates.suse.com/SUSE/Updates/SLE-SERVER/12/x86_64/update 	42 repositories

You can derive the values for the name and distro_target keys based on the following guidelines:

For SUSE 11 products:

The Repository Base URL starts with `https://updates.suse.com/repo/$RCE`.

You can determine the name and distro_target values by using this format:

```
https://updates.suse.com/repo/$RCE/<name>/<distro_target>
```

For example:

Figure 10. SUSE 11 example showing the name and distro_target

SLE11-SP1-Debuginfo-Updates (i386) [https://updates.suse.com/repo/\\$RCE/SLE11-SP1-Debuginfo-Updates/sle-11-i586](https://updates.suse.com/repo/$RCE/SLE11-SP1-Debuginfo-Updates/sle-11-i586)

↑
↑
name
distro_target

With this information, the custom repository file will be as follows:

```
{
  "sles-11-x86-sp3" : [
    { "name" : "SLE11-SP4-Debuginfo-Updates", "distro_target" : "sle-11-i586" }
  ]
}
```

For SUSE 12 products:

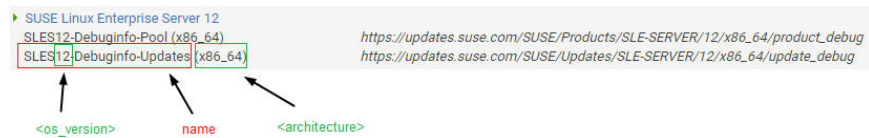
The Repository Base URL starts with `https://updates.suse.com/SUSE/`

You can determine the name value based on the Repository Name (without the architecture information) and the distro_target value by using the following format:

```
sle-<os_version>-<architecture>
```

For example:

Figure 11. SUSE 12 example showing the name, os version, and architecture



With this information, the custom repository file will be as follows:

```
{
  "sles-12-x86_64-sp0": [
    { "name": "SLES12-Debuginfo-Updates", "distro_target": "sle-12-x86_64" }
  ]
}
```

Updating the SCC download plug-in configuration file

Configure the SCC Download Plug-in to use an extended repository list file. The `plugin.ini` configuration file is overwritten when the SCC download plug-in is unregistered or configured from the Manage Download Plug-in dashboard. Any change that you make in the configuration file is lost, therefore take note of the previous changes.

1. Use a text editor to open the `plugin.ini` file from the following locations:

On Windows systems

```
%PROGRAM FILES%\BigFix Enterprise\BES Server\DownloadPlugins
\SCCProtocol
```

On Linux systems

```
/var/opt/BEServer/DownloadPlugins/SCCProtocol
```

2. In the **extendedRepoListFile** field, enter the absolute path or relative path to the extended repository list file. If it is set to a relative path, the path must be relative to the location of the SCC download plug-in executable.

For example:

```
extendedRepoListFile = C:\Program Files (x86)\BigFix Enterprise\
  BES Server\DownloadPlugins\SCCProtocol\<extendedRepoList>.json
```

3. If you want set the SCC Download Plug-in to only use the extended repository list, set the **onlyUseExtendedRepoListFile** field to yes.

For example:

```
onlyUseExtendedRepoListFile= yes
```

If you want to set SCC Download Plug-in to use both repository list files, configure the setting to no. In cases where the same OS key is used in both files, the repositories will be combined.

4. Save the file.

Chapter 3. Using the download cacher

The download cacher is a standalone command-line tool that is designed to download and cache files required for caching. The pre-cached files can be used by the download plug-in to patch the endpoints.

The download cacher is designed to be used for air-gapped environments. Use this tool to download and cache a large number of packages that are required by the Fixlets. By pre-caching the files, execution of actions are faster because you do not need to download the files from the Internet before distributing them to BigFix clients.



Note: If the BigFix server has access to the Internet, use the download plug-in. You must register the download plug-in from the Manage Download Plug-ins dashboard. For more information, see [Registering the SCC download plug-in \(on page 27\)](#).

You can access the tool by downloading and running it manually.

SCC download cacher usage information

Use the SUSE Customer Center (SCC) download cacher to download and cache SUSE patches in air-gapped environments. This tool supports the **Patches for SLE 12 Native Tools**, **Patches for SLE 12 on System z**, **Patches for SLE 11 Native Tools**, and **Patches for SLE 11 on System z Native Tools** sites.

The SCC download cacher accesses the following URLs:

- <https://scc.suse.com:443>
- <https://updates.suse.com:443>
- <http://sync.bigfix.com:80>



Note: To avoid download errors, ensure to configure your whitelist, firewall, or proxy to allow traffic through the listed hosts and ports.

You can run the SCC download cacher on a Windows system or a Linux system. For more information, see https://help.hcltechsw.com/bigfix/10.0/platform/Platform/Installation/c_spcr_platform.html

The latest SCC download cacher is available from the BigFix Support site.

- For Windows systems, download the tool at <https://software.bigfix.com/download/bes/util/SCCDownloadCacher.exe>.
- For Linux systems, download the tool at <https://software.bigfix.com/download/bes/util/SCCDownloadCacher-linux.tar.gz>. This tool is supported on x86-64 (64-bit) systems.



Note: To use the tool successfully, ensure to install the following packages and their dependencies:



- GLIBC version 2.2.5 or later
- GLIBC version 2.3 or later
- GNU/Linux kernel version 2.6.31 or later



Note: For illustration purposes, this section indicates the steps to run the SCC download cacher in Windows. However, the parameters and subcommands to run the SCC download cacher are the same for both Windows and Linux systems.

You can run the tool `SCCDownloadCacher.exe` to perform additional operations. To run this tool from the command prompt, use the following command:

```
SCCDownloadCacher.exe [-h] --mirrorUser <username> --mirrorPass <base64_encoded_password>
[parameters...] {subcommand} [-h] [subparameters...]
```

where:

-h

Specifies the help message of a command instead of running the command.

--mirrorUser *username*

Specifies the SCC mirror user name. This value is required.



Note: You can get the mirror credentials for your organization from SUSE Customer Center. For more information, see [Mirroring Credentials](#).

--mirrorPass *password*

Specifies the SCC mirror password. This value must be base64 encoded.

parameters

Specifies the optional parameters to be used to configure the download cacher.

--proxyServer

Specifies the URL of the proxy server to use. It must be a well-formed URL that contains a protocol and a host name. The URL is usually the IP address or DNS name of your proxy server and its port, which is separated by a colon. For example: `http://192.168.100.10:8080`.

--proxyUser

Specifies the proxy user name if your proxy server requires authentication. It is usually in the form of `domain\username`.

--proxyPass

Specifies the proxy password if your proxy server requires authentication.

Only basic authentication is supported. Ensure that the proxy is configured to work with the Transport Layer Security (TLS) protocol.

--download_dir

Specifies the directory where the files are cached.

If this parameter is not defined, the files are downloaded to the directory that is relative to the download cacher executable directory.

--sha1_download_dir

Specifies the directory where the files are cached with a sha1 filename into a single flat directory. The cacher downloads all packages from all repositories (keys) as files in the specified directory.

Only the packages are stored in the `sha1_download_dir`. Each repository metadata is stored in the `download_dir`, and the SUSE Repository directory structure is maintained.



Note: When using this parameter, consider the cache limit of the BigFix server's sha1 file folder.

Space-saving benchmarks are established with the use of the `--sha1_download_dir` through the `check-storagereq` subcommand. Using `--sha1_download_dir` have shown significant decrease in storage size, download size, and time when caching multiple repositories of the same SUSE version. This is because many packages are duplicated among repositories with the same SUSE version (for example, `sles-12-x86_64-sp2`, `sles-12-x86_64-sp1`, `sled-12-x86_64-sp1`). Space is not saved if you only cache a single repository for each SUSE version (for example, `sles-12-x86_64-sp2`, `sles-11-x86_64-sp2`).

Sample results:

```
SCCDownloadCacher.exe --mirrorUser username --mirrorPass base64_encoded_password
check-storagereq --key sles-12-x86_64-sp2,sles-12-x86_64-sp1,sled-12-x86_64-sp1

For Repo Keys: ['sles-12-x86_64-sp2', 'sles-12-x86_64-sp1', 'sled-12-x86_64-sp1']
Total Repo Metadata size:
150 MB
Total Packages count: With sha1 (Without sha1)
13219 (22015)
Total Packages size: With sha1 (Without sha1)
37 GB (61 GB)
Total Repo Metadata & Packages size: With sha1 (Without sha1)
37 GB (61 GB) [39 % saved]
```

--redownload

Specifies the flag to re-download and overwrite existing RPM files that are in the download directory.

If this parameter is not defined, RPM files are not re-downloaded. However, metadata are, by default, downloaded and overwritten.

--redownload

Specifies the flag to re-download and overwrite existing RPM files that are in the download directory.

If this parameter is not defined, RPM files are not re-downloaded. However, metadata are, by default, downloaded and overwritten.

--help

Specifies the full description and help of a command instead of running the command.

subcommand subparameter

Specifies the subcommand and subparameters to be used to run the download cacher.



Note: The subcommand and subparameter names are case-sensitive.

The *subparameter* varies for each *subcommand* as follows:

showKeys

Outputs the list of OS keys for the supported repositories in the *<cache directory>\logs\SCCDownloadCacher.log* file. An OS key indicates the SUSE operating system version, architecture, and service pack of a single SUSE repository.

The syntax to run this subcommand is:

```
SCCDownloadCacher.exe --mirrorUser <username>
--mirrorPass <base64_encoded_password>
[parameters] showKeys
```

buildRepo

Builds a local mirrored repository and downloads all the relevant files based on the specified OS key.

The syntax to run this subcommand is:

```
SCCDownloadCacher.exe --mirrorUser <username>
--mirrorPass <base64_encoded_password>
[parameters] buildRepo --key <OS_key1,OS_key2,...>
```

where:

--key OS_key1,OS_key2,...

Specifies the SUSE operating system version, architecture, and service pack. Entries must be separated by a comma and must not include spaces. It must use the following format:

```
<product>-<version_number>-<architecture>-<sp_level>
```

For example, `--key sles-12-x86_64-sp0,sles-11-x86-sp4`.

downloadMetadataOnly

Downloads the metadata of the specified OS keys.

The syntax to run this subcommand is:

```
SCCDownloadCacher.exe --mirrorUser <username>
--mirrorPass <base64_encoded_password>
[parameters] downloadMetadataOnly --key <OS_key1,OS_key2,...>
```

where:

--key OS_key1,OS_key2,...

Specifies the SUSE operating system version, architecture, and service pack. Entries must be separated by a comma and must not include spaces. It must use the following format:

```
<product>-<version_number>-<architecture>-<sp_level>
```

For example, `--key sles-12-x86_64-sp0,sles-11-x86-sp4`.

downloadPkg

Downloads the listed RPM files for the specified OS key.

The syntax to run this subcommand is:

```
SCCDownloadCacher.exe --mirrorUser <username>
--mirrorPass <base64_encoded_password>
[parameters] downloadPkg --key <OS_key1,OS_key2...>
--pkg <pkg1,pkg2,...>
```

where:

--key OS_key1,OS_key2,...

Specifies the SUSE operating system version, architecture, and service pack. Entries must be separated by a comma and must not include spaces. It must use the following format:

```
<product>-<version_number>-<architecture>-<sp_level>
```

For example, `--key sles-12-x86_64-sp0,sles-11-x86-sp4`.

--pkg *pkg1, pkg2, ...*

Indicates the package name.

Each entry must be separated by a comma and must not include spaces. For example, `--pkg`

`liblcms1-1.17-77.12.1.x86_64.rpm,liblcms1-32bit-1.17-77.12.1.x86_64.rpm`.

downloadByPatchId

Downloads files based on the patch ID for one or more OS keys.

The syntax to run this subcommand is:

```
SCCDownloadCacher.exe --mirrorUser <username>
--mirrorPass <base64_encoded_password>
[parameters] downloadByPatchId --key <OS_key1,OS_key2...>
--patch_id <patch_id1,patch_id2,...>
```

where:

--key *OS_key1, OS_key2, ...*

Specifies the SUSE operating system version, architecture, and service pack. Entries must be separated by a comma and must not include spaces. It must use the following format:

```
<product>-<version_number>-<architecture>-<sp_level>
```

For example, `--key sles-12-x86_64-sp0,sles-11-x86-sp4`.

--patch_id *patch_id1, patch_id2, ...*

Indicates the patch ID of a Fixlet, which is the first six digits in the Fixlet title.

Each entry must be separated by a comma and must not include spaces. For example, `--patch_id 100601,100602`.

Using the SCC download cacher for air-gapped environments

You can use the SCC download cacher for air-gapped environments by using the `buildRepo` subcommand to download all patches for a repository to a specified directory.

- Ensure you have access to the BigFix supported SUSE base repositories and sub-repositories. To check, run the subcommand `check-allrepos`.
- Ensure you have enough space to download the repository metadata and packages. To check for the required storage space, run the subcommand `check-storagereq`.
- Increase the BigFix server's sha1 folder size limit by doing the following steps:

1. From the BigFix console, right-click the computer and select **Edit Computer Setting**.
2. Increase the `_BESGather_Download_CacheLimitMB` size.

The suggested size is the current BigFix server's sha1 folder size plus the size of `sha1_download_dir`.

If the size of the `sha1_download_dir` cannot be determined beforehand the suggested size of the `sha1_download_dir` is a minimum of 50GB per repository. Note that the minimum size of 50GB might increase over time.

1. Use the `buildRepo` subcommand with the `SCCDownloadCacher.exe` file to download all patches for a repository to a specified directory. For example:

```
SCCDownloadCacher.exe --mirrorUser username --mirrorPass base64_encoded_password
--download_dir C:\downloads --sha1_download_dir C:\sha1_downloads
buildRepo --key sles-12-x86_64-sp0,sles-11-x86-sp4
```

In this example, the download cacher tool downloads the packages to `sha1_download_dir` and the repository metadata to `download_dir` for both the "sles-12-x86_64-sp0" and "sles-11-x86-sp4" repositories.

2. Transfer the `download_dir` to the air-gapped BigFix server and the sha1 files in `sha1_download_dir` to the BigFix Server's sha1 fold.
3. Open the configuration file of the SCC download plug-in called `plugin.ini`. Configure the `plugin.ini` file with the following settings so that the SCC download plug-in retrieves the required packages from the directory instead of trying to retrieve the packages online.

```
localCache = <download_directory_specified_for_the_--download_dir_parameter>
localCacheOnly = yes
```

 **Tip:** Use the `showKeys` command to show the list of OS keys for the currently supported repositories in the `<cache_directory>\logs\SCCDownloadCacher.log` file :

```
SCCDownloadCacher.exe --mirrorUser <username> --mirrorPass <base64_encoded_password>
[parameters] showsKeys
```

Caching packages on the sha1 folder

You can use the SCC Download Cacher to cache packages directly on an internet-enabled BigFix server's sha1 folder to improve performance during the Fixlet deployment.

- Ensure you have access to the BigFix supported SUSE base repositories and sub-repositories. To check, run the subcommand `check-allrepos`.
- Ensure you have enough space to download the repository metadata and packages. To check for the required storage space, run the subcommand `check-storagereq`.
- Increase the BigFix server's sha1 folder size limit by doing the following steps:

1. From the BigFix console, right-click the computer and select **Edit Computer Setting**.
2. Increase the **_BESGather_Download_CacheLimitMB** size.

The suggested size is the current BigFix server's sha1 folder size plus the size of *sha1_download_dir*.

If the size of the *sha1_download_dir* cannot be determined beforehand the suggested size of the *sha1_download_dir* is a minimum of 50GB per repository. Note that the minimum size of 50GB might increase over time.

This task enables the BigFix Server to leverage the internet to ensure that the necessary files, such as the repository metadata and packages, are available during Fixlet deployment.

1. Use the `buildRepo` subcommand with the `SCCDownloadCacher.exe` file to download packages from a repository to the BigFix server's sha1 folder. For example:

```
SCCDownloadCacher.exe --mirrorUser username --mirrorPass base64_encoded_password
--download_dir C:\downloads --sha1_download_dir
C:\Program Files (x86)\BigFix Enterprise\BES Server\wwwrootbes\bfmirror\downloads\sha1
buildRepo --key sles-12-x86_64-sp0, sles-11-x86-sp4
```

In this example, the download cacher tool downloads the packages directly to the BigFix server's sha1 folder.

2. Open the configuration file of the SCC Download Cacher called `plugin.ini`. Configure the `plugin.ini` file with the following settings to set the BigFix Server to retrieve the packages from its sha1 folder.

```
localCache =
localCacheOnly = no
```

Do not specify a value for the `localCache` setting if the BigFix server is internet-enabled and the packages are saved directly in the BigFix server's sha1 folder.

The BigFix server will first check if the necessary files are in the download plug-in's cache and sha1 folders before retrieving them from the internet. If the repository metadata in the download plug-in's cache folder has expired, a new repository metadata is downloaded online. If the required packages do not exist in the BigFix server's sha1 folder, the packages are downloaded from the internet.

Caching packages on the local cache folder

You can use the SCC Download Cacher to cache packages on an internet-enabled BigFix server. You can configure the BigFix Server to use the repository metadata and packages from both the cache folder and the internet.

Store packages in a separate folder instead of the BigFix server's sha1 folder in case the folder size inflates. Since the BigFix server only stores the latest download, the stored packages might be replaced by newer files if the BigFix server sha1 folder size limit is too small.

Storing the packages in the local cache allows the SCC Download Plug-in to use it instead of getting it from the internet.

Additional space may be required as the package will also be cached in the BigFix server's sha1 folder when the BigFix server requests the package from the local cache.

1. Use the `buildRepo` subcommand with the `SCCDownloadCacher.exe` file to download packages from a repository to the BigFix server's sha1 folder. For example:

```
SCCDownloadCacher.exe --mirrorUser username --mirrorPass base64_encoded_password
--download_dir C:\downloads buildRepo --key sles-12-x86_64-sp0, sles-11-x86-sp4
```

In this example, the download cacher tool downloads the packages to the specified download folder.

2. Open the configuration file of the SCC Download Cacher called `plugin.ini`. Configure the `plugin.ini` file with the following settings:

```
localCache = <location of the transferred download_dir>
localCacheOnly = no
```

With this setting, the BigFix server first checks the repository metadata in the download plug-in's cache folder. If it has not expired, the BigFix server will use that metadata. Otherwise, the BigFix server will get the repository metadata from the internet. As for the packages, the BigFix server initially checks if the packages exist in the sha1 folder, then proceeds to the localCache before it goes to the internet.

Chapter 4. Using BigFix Patch for SUSE Linux Enterprise

BigFix Patch provides a simplified patching process for downloading and installing patches that are relevant to a target endpoint. Use the Fixlets on the Patching Support and the various Patches for SUSE Linux Enterprise Fixlet sites to apply patches to your deployment.

For information about the available Fixlet sites for SUSE Linux Enterprise, see [Supported platforms and updates \(on page 8\)](#).

Patch content caching must be done through the download plug-in unless you are using an air-gapped environment or a custom repository. For more information, see the following topics:

- [Using the download cacher \(on page 43\)](#)
- [Using the download plug-in \(on page 25\)](#)
- [Custom repositories management \(on page 62\)](#)

Patching using Fixlets

You can apply SUSE Linux™ patches to your deployment by using the Fixlets on the Patches for SLE sites.

- For x86, x86_64, and s390x SUSE patches, register the SCC download plug-in. For more information about the download plug-in, see [Using the download plug-in \(on page 25\)](#).
- Subscribe to the appropriate sites.
- Activate the necessary analysis from the subscribed sites.
- Ensure that the required compression utilities are installed on the endpoints. The following packages must be installed on the endpoints:
 - zlib
 - zypper
- Ensure that `/var` directory is not mounted as `noexec` to prevent issues during Fixlet deployment.
- If you are using custom repositories, run the **Enable custom repository support - SUSE Linux Enterprise** task prior to deploying any Fixlets.
- You can activate the **Endpoint Dependency Resolution - Deployment Results** analysis to view the patch deployment results.

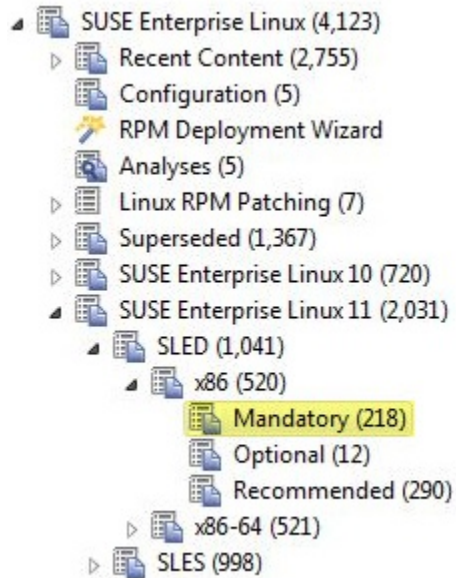
The possible actions that you can make on a Fixlet depend on the patch type. For example, patch Fixlets provide an option to deploy a test run prior to applying the patch. Kernel updates provide the option to upgrade or install all kernel packages. The default behavior for kernel updates is to install packages side by side. Additionally, each kernel update Fixlet provides the ability to test each of these options.



Note: The upgrade option in Kernel updates replaces existing kernel packages with later versions. The install option installs the later kernel packages next to the previous versions.

1. From the Patch Management domain, click **OS Vendors > SUSE Linux Enterprise**, and navigate to the patch content using the domain nodes.

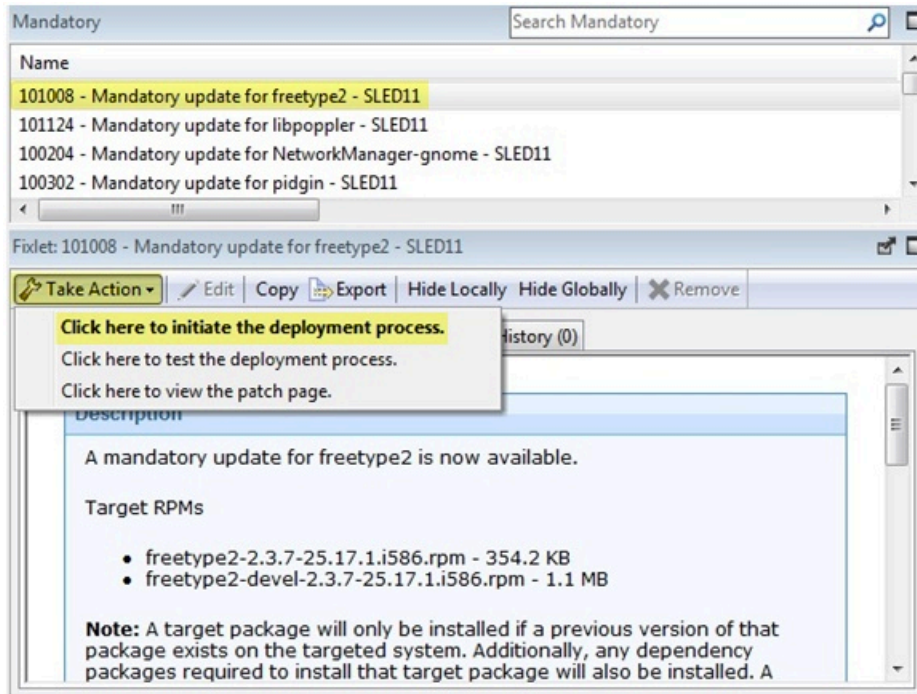
Figure 12. Patch Management navigation tree



2. In the content that is displayed in the list panel, select the Fixlet that you want to deploy. The Fixlet opens in the work area.
3. Click the tabs at the top of the window to review details about the Fixlet.
4. Click **Take Action** to deploy the Fixlet.

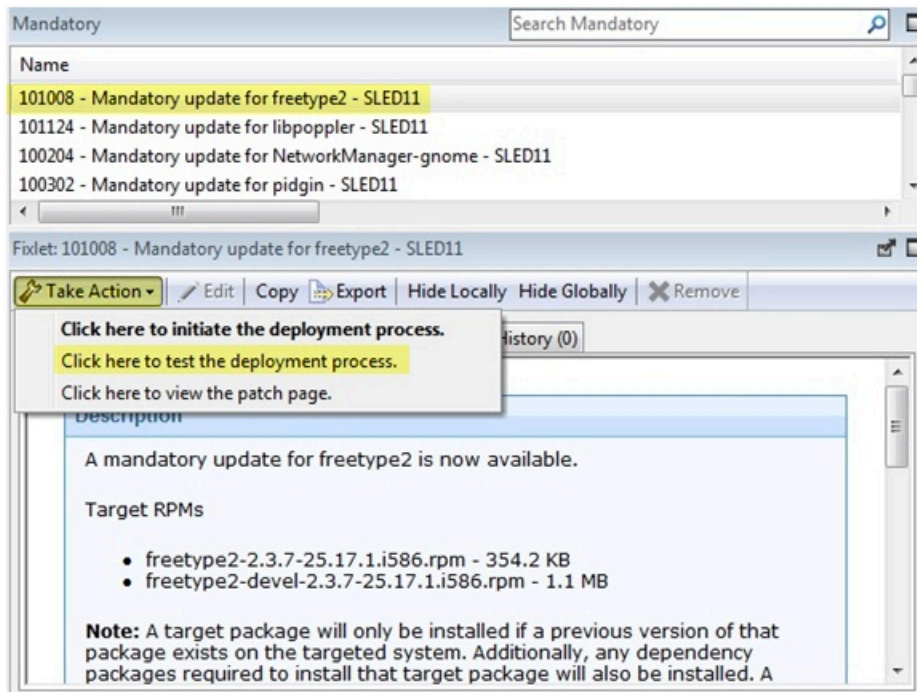
- You can start the deployment process.

Figure 13. Take action to start the deployment process



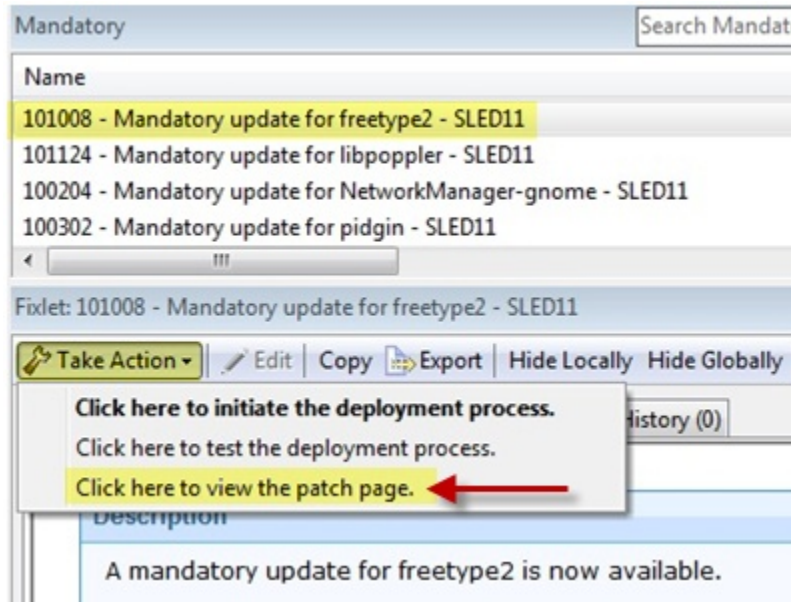
- You can deploy a test run prior to applying the patch. View the **Deployment Results** analysis to determine if the dependencies have been successfully resolved and if an installation is successful.

Figure 14. Take action to deploy a test



- You can view the Novell bulletin for a particular Fixlet, select the **Click here to view the patch page** action to view the patch page.

Figure 15. Take action to view patch page



You can also click the appropriate link in the Actions box.

5. You can set more parameters in the Take Action dialog.

For detailed information about setting parameters with the Take Action dialog, see the [BigFix Console Operator's Guide](#).

6. Click **OK**.

Supersedence

Please refer to Supersedence for Non-Windows to know more about the supersedence.

Chapter 5. Multiple-Package Baseline Installation

BigFix Patch provides a solution to combine the installation of updates for multiple packages in a baseline into a single task, which can reduce the execution time of the baseline.

Baselines can help you gather multiple Fixlets into groups, which you can apply immediately to any set of target computers. It is a powerful way to deploy a group of actions across an entire network. However, each Fixlet in a baseline creates a separate zypper update transaction when the baseline is run. A single baseline can have numerous zypper calls, which can severely impact performance as it increases the time taken to complete all the transactions.

The multiple-package baseline installation solution helps address the poor performance that is due to the dependency resolution and package installation that is done separately for each Fixlet. This solution requires you to enable the feature at the start of the baseline and append the installation task to install the relevant packages from a single zypper call.

Use the **Enable the Multiple-Package Baseline Installation feature** task or the **Enable the Multiple-Package Baseline Installation feature** task to set the flag that instructs Fixlets to add packages to a list instead of installing them. The flag is cleared after the baseline is completed. You must add the appropriate task at the start of the baseline to allow the installation of multiple packages from a single command.

A multiple-package installation task is made available for each SUSE distribution, operating system version, service pack level, and architecture. You must add the appropriate installation task at the end of your baseline to complete the dependency resolution, download the packages, and then install them on the endpoints.



Note: The multiple-package baseline installation feature does not support the pre-cache option **Start download before all constraints** are met in **Take Action**.



Important: The **Enable the Multiple-Package Baseline Installation feature** and **Multiple-Package Baseline Installation** tasks must exist in the same baseline.

Available from the Patches for SLE 12 Native Tools site:

- Multiple-Package Baseline Installation - SLES 12 - x86_64 - SP0
- Multiple-Package Baseline Installation - SLED 12 - x86_64 - SP0
- Multiple-Package Baseline Installation - SLES 12 - x86_64 - SP1
- Multiple-Package Baseline Installation - SLED 12 - x86_64 - SP1
- Multiple-Package Baseline Installation - SLES 12 - x86_64 - SP2
- Multiple-Package Baseline Installation - SLED 12 - x86_64 - SP2
- Multiple-Package Baseline Installation - SLES 12 - x86_64 - SP3
- Multiple-Package Baseline Installation - SLED 12 - x86_64 - SP3

Available from the Patches for SLE 12 on System z site:

- Multiple-Package Baseline Installation - SLES 12 - s390x - SP0
- Multiple-Package Baseline Installation - SLES 12 - s390x - SP1
- Multiple-Package Baseline Installation - SLES 12 - s390x - SP2
- Multiple-Package Baseline Installation - SLES 12 - s390x - SP3

Available from the Patches for SLE 12 PPC64LE site:

- Multiple-Package Baseline Installation - SLES 12 - ppc64le - SP0
- Multiple-Package Baseline Installation - SLES 12 - ppc64le - SP1
- Multiple-Package Baseline Installation - SLES 12 - ppc64le - SP2
- Multiple-Package Baseline Installation - SLES 12 - ppc64le - SP3

Available from the Patches for SLE 11 Native Tools site:

- Multiple-Package Baseline Installation - SLES 11 - x32 - SP0
- Multiple-Package Baseline Installation - SLED 11 - x32 - SP0
- Multiple-Package Baseline Installation - SLES 11 - x86_64 - SP0
- Multiple-Package Baseline Installation - SLED 11 - x86_64 - SP0
- Multiple-Package Baseline Installation - SLES 11 - x32 - SP1
- Multiple-Package Baseline Installation - SLED 11 - x32 - SP1
- Multiple-Package Baseline Installation - SLES 11 - x86_64 - SP1
- Multiple-Package Baseline Installation - SLED 11 - x86_64 - SP1
- Multiple-Package Baseline Installation - SLES 11 - x32 - SP2
- Multiple-Package Baseline Installation - SLED 11 - x32 - SP2
- Multiple-Package Baseline Installation - SLES 11 - x86_64 - SP2
- Multiple-Package Baseline Installation - SLED 11 - x86_64 - SP2
- Multiple-Package Baseline Installation - SLES 11 - x32 - SP3
- Multiple-Package Baseline Installation - SLED 11 - x32 - SP3
- Multiple-Package Baseline Installation - SLES 11 - x86_64 - SP3
- Multiple-Package Baseline Installation - SLED 11 - x86_64 - SP3
- Multiple-Package Baseline Installation - SLES 11 - x32 - SP4
- Multiple-Package Baseline Installation - SLED 11 - x32 - SP4
- Multiple-Package Baseline Installation - SLES 11 - x86_64 - SP4
- Multiple-Package Baseline Installation - SLED 11 - x86_64 - SP4

Available from the Patches for SLE 11 on System z Native Tools site:

- Multiple-Package Baseline Installation - SLES 11 - s390x - SP0
- Multiple-Package Baseline Installation - SLES 11 - s390x - SP1
- Multiple-Package Baseline Installation - SLES 11 - s390x - SP2
- Multiple-Package Baseline Installation - SLES 11 - s390x - SP3
- Multiple-Package Baseline Installation - SLES 11 - s390x - SP4

These tasks must be run at the end of the baseline to do dependency resolution and package installation for the entire baseline in a single instance.

You can also do a dry run of the installation to preview the changes on the packages to avoid broken dependencies, which might be due to undesired packages updates. The test action outputs to the following files at `/var/opt/BESClient/EDRDeployData:`

PkgToInstallList.txt file

This file contains packages that are to be installed after a dependency check.

PkgToRemoveList.txt file

This file contains the packages that are to be removed from the target SUSE endpoint.

BigFix Patch also provides the following content to facilitate the installation:

Delete SUSE 12 Package List File for Multiple-Package Baseline Installation

Deletes the package list file on targeted the SUSE Linux Enterprise 12 (x86_64, s390x, and ppc64le) computers.

Add this task at the beginning of the baseline to avoid issues that might be related with resolving dependencies for the packages.

Delete SUSE 11 Package List File for Multiple-Package Baseline Installation

Deletes the package list file on the targeted SUSE Linux Enterprise 11 (x86, x86_64, and s390x) computers.

Add this task at the beginning of the baseline to avoid issues that might be related to resolving dependencies for the packages.

For detailed information about using the multiple package installation feature, see [Installing multiple packages in a baseline \(on page 58\)](#).

Installing multiple packages in a baseline

The multiple-package baseline installation feature helps you to save time when deploying Fixlets with multiple unique packages from a baseline.

- As older versions of zypper cannot resolve dependency conflict issues, ensure that you patch zypper with the latest update. By doing so, you can ensure that Fixlets for SUSE Linux Enterprise release packages, such as `sled-release-12-5.1.x86_64.rpm` OR `sles-release-12-5.1.x86_64.rpm`, can be installed successfully in the baseline. For details about how to search for certain Fixlets with the zypper patch update, see [Creating a search filter for zypper patches \(on page 61\)](#).
- Set the client download precache size to at least 2GB. Use the `_BESClient_Download_PrecacheStageDiskLimitMB` setting to set the suggested size for the precache.

- Set the client download cache size to at least 2GB. Use the `_BESClient_Download_DownloadsCacheLimitMB` setting to set the suggested size for the cache.
- Ensure that you have at least 4GB of free disk space on each endpoint.

To run a single zypper call to install or update packages for all Fixlets in the baseline, you must add the task to enable the feature and add the appropriate multiple-package baseline installation task into the baseline. For a list of the available tasks, see [Multiple-Package Baseline Installation \(on page 56\)](#).



Notes:

- Packages with broken dependencies are skipped whenever possible. Packages with dependency issues with a SUSE product, such as SLED-12-0.x86_64, cannot be skipped. Another scenario where packages are not skipped is when dependency errors occur during installation, as indicated by the following error message: `File conflicts happen when two packages attempt to install files with the same name but different contents.` In such cases, the installation is canceled and no patches will be installed on the endpoints.
- The multiple-package baseline installation feature does not support the pre-cache option **Start download before all constraints** are met in **Take Action**.



Important: The **Enable the Multiple-Package Baseline Installation feature** and **Multiple-Package Baseline Installation** tasks must be added in the same baseline in order for this feature to work. Also, the order of the tasks and Fixlets are crucial to the baseline installation, therefore take careful note of the steps as they must be taken in the correct order.

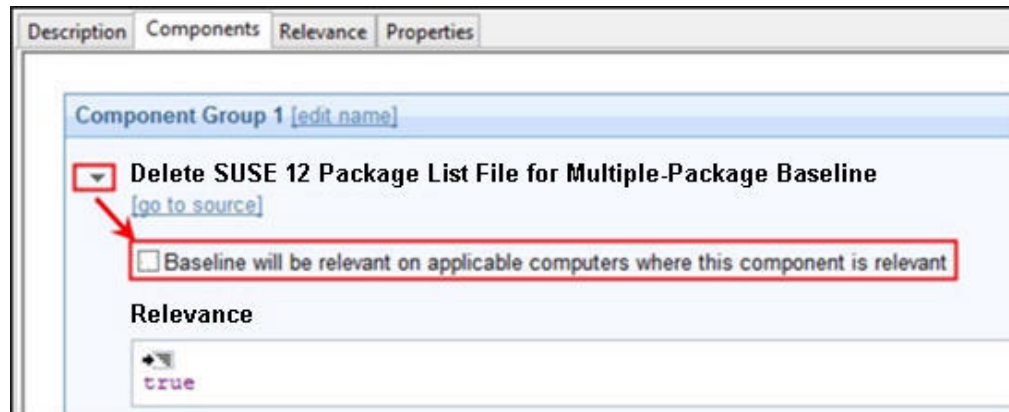
1. Create a baseline.

Highlight the Fixlets from a Fixlet site and select **Add to New Baseline** from the context menu. You can also select **Create New Baseline** from the **Tools** menu.

2. **Optional:** Add the **Delete SUSE 12 Package List File for Multiple-Package Baseline Installation** task or the **Delete SUSE 11 Package List File for Multiple-Package Baseline Installation** task before adding any of the Fixlets.

Ensure that the **Baseline will be relevant on applicable computers where this component is relevant** option is not selected.

Figure 16. Baseline component option



3. Add the appropriate **Enable the Multiple-Package Baseline Installation feature** task.
Ensure that the **Baseline will be relevant on applicable computers where this component is relevant** option is not selected.
4. Selectively add the patch Fixlets in the baseline.
Ensure that for all Fixlets the **Baseline will be relevant on applicable computers where this component is relevant** option is selected.



Note: If you add two or more Fixlets to the baseline that affect different versions of the same package, the installation task will skip the older versions of the package and install the latest one only.

5. Add the appropriate **Multiple-Package Baseline Installation** task at the end of the baseline. With this task, you can deploy any of the following actions:
 - Run a preview of the installation, without actually installing the packages, to check for possible issues.
 - Install all the RPMs in a single zypper transaction.
 Ensure that the **Baseline will be relevant on applicable computers where this component is relevant** option is not selected.

Before running the baseline, ensure that you meet the following requirements:

- The repositories that are registered on the endpoint must contain the target packages and all the required dependency packages.
- Allow enough time for a Fixlet, which is using the multiple-package installation method, to complete all zypper transactions and refresh the status on the endpoints before individually deploying the same Fixlet.
- Do not run multiple baselines from the same site on the same endpoint.
- Follow the Baseline Best Practices documented in the following site: https://support.hcltechsw.com/csm?id=kb_article&sys_id=d288c2021b098c9477761fc58d4bcbdf



Note: When you deploy the baseline, the initial sub-action status for all the patch Fixlets will show that they failed. This is the expected behavior. The process for downloading and installing the packages in the baseline

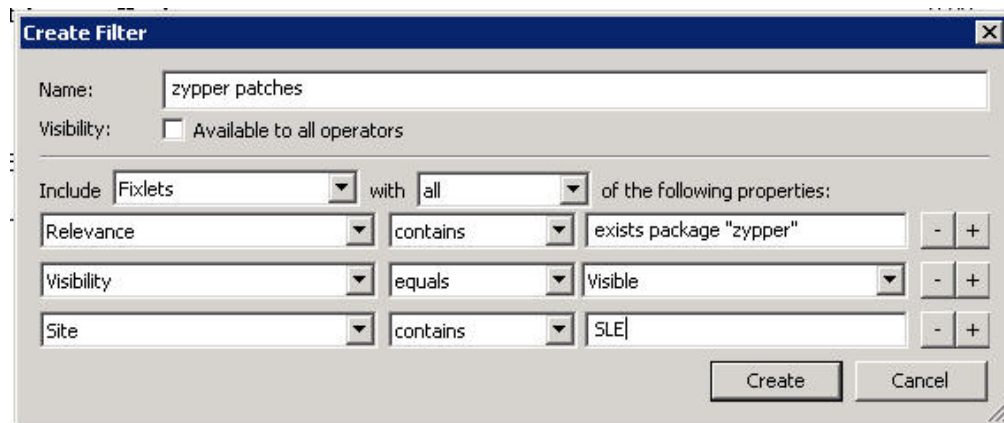
 is not done at the Fixlet action level, but in the **Multiple-Package Baseline Installation** task. When the baseline completes, the baseline sub-action status of the Fixlets will reflect the final state of each patch installation.

Creating a search filter for zypper patches

Create a custom filter in the BigFix console to identify which Fixlets contain zypper patch updates. Install the latest zypper patch update to ensure that the multiple-package baseline installation feature runs successfully.

1. In the BigFix console, press `CRTL+F` or click **Edit > Find** to open the custom Filter dialog.
2. In the **Create Filter** dialog box, enter a name for your new filter in the **Name** field.
3. In the **Include** list, select Fixlets.
4. In the **with** list, select all of the following properties.
5. From the properties list, select **Relevance**, then select **contains** and enter `exists package "zypper"`.
6. Select the **+** symbol to add another filter.
7. From the properties list, select **Visibility**, then select **equals** and enter `Visible`.
8. Select the **+** symbol to add another filter.
9. From the properties list, select **Site**, then select **contains** and enter `SLE`.
10. Click **Create**.

Figure 17. Create Filter



All zypper-related Fixlets are listed.

11. Sort the list by Source Release Date.
12. Apply the latest zypper patch on relevant endpoints.
13. Save the filter for later use.

Chapter 6. Custom repositories management

You can set up your custom repositories and Subscription Management Tool (SMT) to manage patches for SUSE Linux Enterprise version 11 and later. This solution allows for multiple repositories and SMTs on the entire deployment.

With the custom repository support, SUSE Linux Enterprise Fixlets can use Zypper to directly download packages from custom repositories instead of going through the Novell Customer Center. Bandwidth throttling is not supported in a custom repository architecture.

Using custom repositories can give you the flexibility to control what can be deployed to the endpoints in your deployment. For example, you can deploy custom software that you are hosting in your custom repositories, then use the **Install packages by using Zypper** task from the **Patching Support** site to install software on the endpoints. For more information, see [Installing packages from a custom repository \(on page 69\)](#).

Integrating your custom repository or SMT solutions is made easy with the use of the SLE Custom Repository Management dashboard.



Important: You must register the SCC download plug-in when using custom repositories to avoid download errors. The download plug-in can be registered through the Manage Download Plug-ins dashboard.

Differentiating between repository types

The custom support covers both repository and SMT. You can register endpoints to a repository or to an SMT server.



Note: The SLE Custom Repository Management dashboard refers to SMT as one of the repository types for identification purposes only. The dashboard does not affect how SMT works.

Ensure that both types of repository are updated. Actions might fail if the packages are not available.

Repository

This type refers to standard software repositories, which are storage locations that contain a collection of packages and metadata. These repositories can be on online servers, CDs, DVDs, or on other media.

The SLE Custom Repository Management dashboard does not add physical repositories; you must do this action separately.

SMT

With the SMT, enterprise customers can optimize the management of SUSE Linux Enterprise software updates and subscription entitlements. SMT provides a repository and registration target that is synchronized with the Novell Customer Center.

For more information about SMT, see the SUSE documentation at <https://documentation.suse.com/sles/15-SP2/html/SLES-all/book-rmt.html>.

SLE Custom Repository Management dashboard

Use the SLE Custom Repository Management dashboard to easily integrate your existing custom repository or Subscription Management Tool (SMT) solutions with the BigFix patch management solution. Only endpoints on SUSE Linux Enterprise Desktop and Linux Enterprise Server versions 11, 12, and 15 are supported in this dashboard.

The SLE Custom Repository Management dashboard allows the SUSE Linux Enterprise Fixlets to use Zypper for downloads instead of using the standard BigFix downloading infrastructure. The dashboard also allows you to register your custom repositories to use the Zypper commands when installing packages on the endpoints.

To access the dashboard, subscribe to the **Patching Support** site. From the Patch Management domain, click **All Patch Management > Dashboards > SLE Custom Repository Management**. Activate the **Repository Configuration - SUSE Linux Enterprise** analysis to view the content in the dashboard.



Important: Your custom repositories must be pre-configured with the required metadata and headers before you use the dashboard.

Use the SLE Custom Repository Management dashboard to perform the following actions for patch management:

- Register and unregister endpoints to a repository (custom repositories or SMT servers)
- Add, delete, and import custom repositories and SMT servers to the repository dashboard list

Figure 18. SLE Custom Repository Management dashboard

SLE Custom Repository Management

SLE Custom Repository Management

Register SUSE Linux Enterprise endpoints to custom repositories and the Subscription Management Tool (SMT) servers and manage them in your deployment.

Endpoints Repositories

SUSE Linux Enterprise Endpoints

Register a new repository Unregister a repository Filter

<input type="checkbox"/>	Computer Name	OS Version	IP Address	Subnet Address	Repositories
<input type="checkbox"/>	localhost	Linux SuSE Enterprise D...	10.1.255.173	10.1.0.0	1
<input type="checkbox"/>	localhost	Linux SuSE Enterprise D...	10.1.254.175	10.1.0.0	2

Showing all 2 rows

Repositories

Name	Type	URL
------	------	-----



Note: The SLE Custom Repository Management dashboard does not support the creation of a physical repository server or SMT. You must create the repository separately. For more information about creating repositories, see the following resources:

- *SUSE Linux Enterprise Desktop 11 Deployment Guide* at https://www.suse.com/documentation/sled11/book_sle_deployment/data/sec_y2_sw_instsource.html
- *SUSE Linux Enterprise Server 11 Deployment Guide* at https://www.suse.com/documentation/sles11/book_sle_deployment/data/sec_y2_sw_instsource.html
- *SUSE Linux Enterprise Desktop 12 Deployment Guide* at https://www.suse.com/documentation/sled-12/book_sle_deployment/data/book_sle_deployment.html
- *SUSE Linux Enterprise Server 12 Deployment Guide* at https://www.suse.com/documentation/sles-12/book_sle_deployment/data/book_sle_deployment.html



Important: You must register the SCC download plug-in when using custom repositories to avoid download errors. The download plug-in can be registered through the Manage Download Plug-ins dashboard.

Adding a repository or SMT

Add a custom repository or a Subscription Management Tool (SMT) server into the dashboard repository list so that you can register and connect it to endpoints.

Activate the **Repository Configuration - SUSE Linux Enterprise** analysis to populate the dashboard with endpoint and repository information.

1. From the **SLE Custom Repository Management** dashboard, click the **Repositories** tab.
2. Click **Add**.
3. From the **Add a New Repository** dialog, select the repository type that you want to add.



Note: Ensure that the repository settings match the repository server configuration.

- If you are adding a standard repository, enter values for the following fields:

Repository Name

Specifies the repository name to use in your BigFix deployment.

Repository URL

Specifies the URL to access the repository.

Figure 19. Adding a repository

- If you are adding an SMT server, enter values for the following fields:

SMT Server Name

Specifies the SMT server name to use in your BigFix deployment.

SMT Server URL

Specifies the SMT Server URL in the form of `https://<servername>/center/regsvc` on a default setup. For example, `https://smt12.example.com/center/regsvc`.

clientSetup4SMT script URL

The clientSetup4SMT script URL is generated automatically when you enter the SMT Server URL. Typically, it is in the form of `https://<servername>/repo/tools/clientSetup4SMT.sh`.


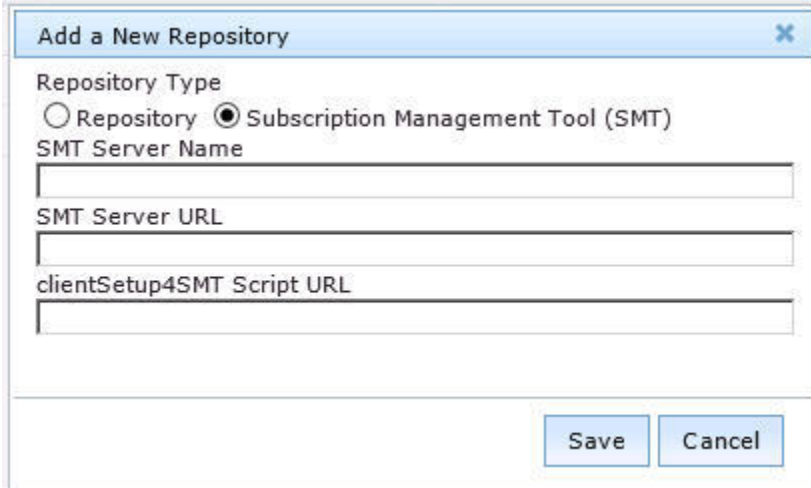

 **Note:** The generated script URL can be accessed directly in a browser to check its validity. If it is valid, download a copy of the `clientSetup4SMT.sh` file.

Figure 20. Adding an SMT



 **Note:** When you enter the SMT Server URL, the clientSetup4SMT script URL is generated automatically. This script is provided with SMT to configure endpoints to use the SMT server or to reconfigure it to use a different SMT server.

4. Click **Save**.

To connect the added repository to an endpoint, see [Registering endpoints to a repository or SMT \(on page 66\)](#).


If you want to add all the known existing repositories of an endpoint, both SMTs and standard repositories, to the dashboard list, use the Import feature. For more information, see [Importing repositories or SMTs \(on page 69\)](#).

Registering endpoints to a repository or SMT

Use the SLE Custom Repository Management dashboard to connect your repositories and SMTs to endpoints.

- Ensure that the repository settings match the repository server configuration.
- Activate the **Repository Configuration - SUSE Linux Enterprise** analysis.
- For SUSE Linux Enterprise Server 12 and SUSE Linux Enterprise Desktop 12, if an endpoint is already registered to an SMT, unregister it from the SMT before registering it to a new SMT server.

1. From the **SLE Custom Repository Management** dashboard, click the **Endpoints** tab.
2. Select the endpoints that you want to register to a repository or SMT from the first table. The repositories or SMTs of the selected endpoints are listed in the second table.

 **Note:** When a repository is named as unspecified, it means that it is not listed in the Repository list of the dashboard.


3. Click **Register a new repository**.
4. From the **Register a New Repository** dialog, select a repository or an SMT and click **Next**.

Figure 21. Registering an endpoint to a repository



	Name	Type	URL
<input checked="" type="radio"/>	Repository1	Repository	cd:///?devices=/dev/sr0
<input type="radio"/>	Repository2	Repository	http://www.dsfk.ckd
<input type="radio"/>	SMT	SMT	http://smt.sample.com

Next Cancel

 **Note:** An endpoint can be registered to only one SMT at a time. For SUSE Linux Enterprise Server 11, registering a different SMT overrides the registration with the existing SMT. For SUSE Linux Enterprise Server 12, the existing SMT does not get overridden with the new SMT. You must unregister the existing endpoint before registering it to a new SMT.

- If you selected a repository, you can add more configuration information from the available options.

Probe given URI

Checks the given repository upon registration.

Enable autorefresh of the repository

Automatically refreshes the repository before reading the metadata from the database.

Additional Fields

Use the field to add more configuration information for the repository. For example, if you use a repository that is not a mirror of the vendor site, enter `gpgcheck=0` to prevent a patch from failing because the files cannot be opened.

Figure 22. Additional configuration fields when registering endpoints to a repository

Register a New Repository

Repository Name
Repository1

Repository URL
cd:///devices=/dev/sr0

Probe given URI:

Enable autorefresh of the repository:

Additional Fields

Back Save Cancel

- If you selected an SMT, enter the location of the clientSetup4SMT Script.
5. Click **Save**. This information is saved in the Zypper configuration files.
 6. From the Take Action dialog, select the computers and click **OK** to deploy the action.

Run the **Enable custom repository support - SUSE Linux Enterprise** task prior to deploying any Fixlets.

Unregistering endpoints from a repository or SMT

Use the SLE Custom Repository Management dashboard to unregister endpoints from repositories or SMTs that are no longer relevant.

When you unregister a repository, the Zypper services and repositories from the endpoint that you selected are removed.

The Zypper configuration file is not deleted, but disabled when an endpoint is unregistered from a standard or SMT repository.

If you unregister an endpoint from an SMT repository, you must log in to the SMT server and delete the selected computer manually.

1. From the **SLE Custom Repository Management** dashboard, click the **Endpoints** tab.
2. Select the endpoints that you want to unregister a repository from.
3. Click **Unregister a new repository**.
4. From the **Unregister a New Repository** dialog, select a repository and click **Save**.
5. From the Take Action dialog, select the computers and click **OK** to deploy the action.

Deleting repositories or SMTs

To manage the dashboard repository list more easily, delete the repositories or SMTs that no longer exist in your deployment.

1. From the **SLE Custom Repository Management** dashboard, click the **Repositories** tab.
2. Select the repositories that you want to delete and click **Delete**. A delete confirmation dialog displays.
3. Click **Yes** to confirm and proceed with the deletion of the selected repositories.

The selected repositories are removed from the list.

Importing repositories or SMTs

Use the Import feature of the SLE Custom Repository Management dashboard to add all the known existing repositories of an endpoint to the list of repositories in the dashboard.

Activate the **Repository Configuration - SUSE Linux Enterprise** analysis.

1. From the **SLE Custom Repository Management** dashboard, click the **Repositories** tab.
2. Click **Import**.
3. From the **Import Existing Repositories** dialog, select the repositories or SMTs that you want to add in the dashboard repository list.
4. Enter a name for the repository.
5. Click **Save**.

The repositories or SMTs are now imported and added to the list in the dashboard.

Installing packages from a custom repository

BigFix provides a task to easily install and update custom packages on SUSE Linux Enterprise version 11 and later endpoints that are registered to custom repositories.

- Subscribe to the **Patching Support** site to access the installation task named as **Install packages by using zypper**.
- Configure a custom repository from the SLE Custom Repository Management dashboard. For more information, see [Custom repositories management \(on page 62\)](#).
- Register the SCC download plug-in through the Manage Download Plug-ins dashboard. The data generated by the download plug-in may not be used, but it is crucial that you register the plug-in to avoid download errors.
- Ensure that the configured repository is up-to-date and contains the required packages and metadata.

Use the **Install packages by using zypper** task to install or update the packages on endpoints.

You can use the package name or Common Vulnerabilities and Exposures (CVE) ID number to specify the selected packages for installation.

You can also update all the installed packages on the endpoint with later available versions that are in your custom repository.

The Zypper commands for each of the available actions are as follows:

```
zypper install <package_name1> <package_name2>
```

Updates or installs a package with a specific name. Multiple package update or installation is acceptable. Use a space to separate the package names.

zypper update

Updates all the installed packages on the endpoint.

zypper patch --cve=<cve_number>

Updates a package with a specific CVE ID number. The task fails if no CVE ID number is specified and it only accepts a single CVE reference.

This action requires Zypper version 1.5.3-3.2.

zypper patch --date=<YYYY-MM-DD>

Installs all patches that were issued until the specified date.

This action requires Zypper version 1.5.3-3.2.

Command options are supported as extra flags for the `zypper install` and `zypper update` commands only. For detailed usage information, see the `zypper` man page.

This task also provides actions to test the packages for installation, without installing the packages on the endpoints.

1. From the Patch Management domain, click **All Patch Management > Fixlets and Tasks**.
2. Select the **Install packages by using zypper** task to install custom packages on endpoints.
3. In the Task pane, review the description and follow the instructions in the Actions box to deploy an action.
4. Depending on the action that you selected, provide the necessary information and click **OK**.



Note: To update all installed packages on the endpoint, select the action to install packages, but do not specify any package name.

5. In the Take Action pane, select the endpoints on which the packages are to be installed or updated.
6. Click **OK**.

Chapter 7. SLE Btrfs snapshot management

View and manage SLE Btrfs snapshots from the BigFix console. Snapshot management uses Snapper's ability to roll back Btrfs file system snapshots. This feature works with SUSE Linux Enterprise version 11 SP2 and later.

Btrfs is a new copy-on-write file system that supports file system snapshots of subvolumes. Subvolumes can be in the form of one or more separately-mountable file systems within each physical partition. A snapshot is a copy of the state of a subvolume at a certain time. It is essentially a clone of the subvolume. For more information about Snapper, see the *SUSE product documentation* at https://www.suse.com/documentation/sles11/book_sle_admin/data/cha_snapper.html.



Note: For SUSE Linux Enterprise version 11 SP2 systems, snapshots can be taken only if the partitions are subvolumes and contain the snapper configuration.

SLE Btrfs Snapshot Management dashboard overview

Use the SLE Btrfs Snapshot Management dashboard to manage Btrfs file system snapshots for SLE endpoints in your deployment.



Note: You must use BigFix client version 9.2.1 or later to be able to use this dashboard.

BigFix provides the SLE Btrfs Snapshot Management dashboard to view the list of Btrfs file system snapshots of an endpoint from the console. The rollback feature allows you to reset the system to the state at which a snapshot was taken.

Consider the following scenario to better understand what the rollback feature does. Patching the application server on the endpoint that hosts your web application is a good practice. After a typical day of patching, you started noticing some issues with the system. These issues occurred only after a particular patch was deployed. Using the dashboard, you can easily roll back the system to an earlier state that does not have such issues.

To access the dashboard, subscribe to the **Patching Support** site. From the **Patch Management** domain, click **All Patch Management > Dashboards > SLE Btrfs Snapshot Management**.

Activate the **SLE Btrfs Snapshots** analysis to retrieve the endpoints and the Btrfs file system snapshot information and display them on the dashboard. This analysis is also used to generate a log, which records the results of the rollbacks that are taken in the SLE Btrfs Snapshot Management dashboard. The log is located in the directory `/var/opt/BESClient/EDRDeployData`.

The dashboard lists endpoints and their corresponding snapshot history. Each snapshot displays the following metadata:

Snapshot ID

Unique ID number of the snapshot.

Snapshot Date and Time

Start date and time of the snapshot in coordinated universal time (UTC).

Type

The type of snapshot. There are three different types of snapshots: pre, post, and single.

Pre Snapshot Number

This metadata is applicable only to post snapshot type. It specifies the number of the corresponding pre snapshot.

Cleanup

Algorithm to clean up old snapshots. There are three different cleanup algorithms: number, time line, and empty-pre-post.

Description

A description of the snapshot.



Note: Ensure that you provide a meaningful description during the snapshot creation. This helps to identify the purpose of the snapshot.

For information about the snapshot metadata, see the topic about [Manually Creating and Managing Snapshots](#) in the *SUSE product documentation*.

Figure 23. SLE Btrfs Snapshot Management dashboard

The screenshot shows the SLE Btrfs Snapshot Management dashboard. At the top, there is a title bar and a header section with the text "SLE Btrfs Snapshot Management" and "Display and manage snapshots for Btrfs file systems on SUSE Linux Enterprise endpoints." Below this, there is a section for "Endpoints" with a table containing one row for "sle12". Below the endpoints section, there is a "Snapshot History" section with a "Rollback" button and a table listing various snapshots.

Computer Name	OS Name	IP Address	Subnet Address
sle12	Linux SuSE Enterprise Desktop 12 (3.1...	10.1.222.210	10.1.0.0

Snapshot ID	Snapshot Date and Time	Type	Pre Snapshot N	Cleanup	Description
14	2015-05-13 07:17:45	post	13	number	
13	2015-05-13 07:17:38	pre		number	zypp(zypper)
12	2015-05-06 09:22:40	post	11	number	
11	2015-05-06 09:22:38	pre		number	zypp(zypper)
10	2015-05-05 09:23:43	post	9	number	
9	2015-05-05 09:20:15	pre		number	yast scc
6	2015-04-29 12:15:12	post	5	number	
5	2015-04-29 12:12:16	pre		number	yast scc

The dashboard also offers filtering options to ease searching by using the computer name.

To enable the rollback feature, ensure that `/var/opt/BESClient/*` directories are excluded from the snapshots by running the **Exclude Client Directories From Snapshots** task.

Rolling back a snapshot

Use the rollback option in the SLE Btrfs Snapshot Management dashboard to restore endpoints to a previous system state. The rollback feature allows you to reset system files of an endpoint that were not configured correctly by rolling back to a different snapshot.

Ensure that you meet the following requirements:

- Use BigFix server and console version 9.0 or later.
- Use BigFix client version 9.2.1 or later.
- Use SUSE Linux Enterprise Desktop and SUSE Linux Enterprise Server 11 SP2 or later.
- Subscribe to the **Patching Support** site.
- Exclude `/var/opt/BESClient/*` directories from the snapshots. To exclude data directories when taking snapshots, run the **Exclude Client Directories From Snapshots** task. This task creates the necessary directories and files to exclude the `/var/opt/BESClient/*` directories when taking snapshots.

Consider the following limitations of the rollback feature:

- Configuration changes in the directory on the bootloader cannot be rolled back.
- Kernel installations require manual deletion of the boot entry for a Kernel. Hence, complete rollback is not possible for Kernel installations.
- Excluded mount points and ext3 file systems cannot be rolled back.

1. From the Patch Management domain, click **All Patch Management > Dashboards > SLE Btrfs Snapshot Management**.
2. Select the endpoint whose snapshot history you want to view.
3. Select the snapshot that you want to roll back and click **Rollback**.



Note: Completely reverting to the pre-snapshot affects the changes made by processes other than YaST or Zypper. Therefore, review the changes between the current system state and a snapshot before starting the rollback.

The **Rollback Up To Snapshot** window opens.

4. **Optional:** You can specify file names as additional parameters for the rollback. Click **Apply**.



Note: If you do not specify any file names, all changed files are restored.

5. From the Take Action window, select the computer and click **OK** to run the action.

To verify the rollback, check the `snapper_rollback.log` file located at `/var/opt/BESClient/EDRDeployData`.

Appendix A. Support

For more information about this product, see the following resources:

- [BigFix Support Portal](#)
- [BigFix Developer](#)
- [BigFix Playlist on YouTube](#)
- [BigFix Tech Advisors channel on YouTube](#)
- [BigFix Forum](#)

Appendix B. Troubleshooting

When problems occur, you can determine what went wrong by viewing messages in the appropriate log files that provide information about how to correct errors.

Log files

Enhanced logging with clearer error reporting and error handling to improve troubleshooting.

SCCPlugin.log

Lists the results of the downloads related to the execution of the SCC download plug-in. The amount of information depends on the logging level.

The log can be found in the following locations:

- On Windows systems: `%PROGRAM FILES%\BigFix Enterprise\BES Server\DownloadPlugins\SCCProtocol`
- On Linux systems: `/var/opt/BESServer/DownloadPlugins/SCCProtocol`

The following log files can be found in the client folder in the directory `/var/opt/BESClient/EDRDeployData`.

EDR_DeploymentResults.txt

Lists the results of the EDR deployment and the Zypper output. The log file indicates if the normal Zypper process is used for either a standard repository or SMT.

register-repo.log

Lists the results of the repository registration action of the SLE Custom Repository Management dashboard.

register-SMT.log

Lists the results of the SMT registration action of the SLE Custom Repository Management dashboard.

unregister-repo.log

Lists the results of the unregister repository action of the SLE Custom Repository Management dashboard.

unregister-SMT.log

Lists the results of the unregister SMT action of the SLE Custom Repository Management dashboard.

snapper_rollback.log

Lists Btrfs snapshot rollback feature that is available from the SLE Btrfs Snapshot Management dashboard.

Download plug-in logging levels

The logging level determines the amount of detail that the SCC download plug-in writes to the log files. Set the logging level in the `%PROGRAM FILES%\BigFix Enterprise\BES Server\DownloadPlugins\SCCProtocol\plugin.ini` file.



Note: Logging level values are case-sensitive.

The following logging levels are listed in order of increasing amount of information logged:

ERROR

Contains errors related to the execution of the download plug-in, which might indicate an impending fatal error.

WARNING

Contains information about failed downloads, and reasons for failure.

INFO

Contains general information outlining the progress and successful downloads, with minimal tracing information.

DEBUG

Contains fine-grained information used for troubleshooting issues. This is the most verbose level available.



Note: Setting the logging level to DEBUG increases the amount of information to log, which might have an impact on performance. You must only increase the logging level to DEBUG when investigating an issue.

Common <type> tag errors found in the EDR_DeploymentResults.txt file

The most common <type> tag errors that are found in the EDR_DeploymentResults.txt file are as follows:

No solution (noSolution)

This error means that the requested target packages cannot be installed on the system, because there are conflicts between the target packages and the existing packages on the system.

Incomplete baseline (incompleteBaseline)

This error might appear if third-party packages are fulfilling dependencies and are not recognized by the resolver.

If the <type>incompleteBaseline</type> tag is found in the EDR_DeploymentResults.txt file and <name>name of RPM</name> tag is NOT in the `/var/opt/BESClient/EDR_UnsupportedPackages.txt` file, then you must install the RPM separately.

However, if the RPM is in the EDR_DeploymentResults.txt file, you must downgrade to a version that is supported. You can use the <sanityCheckError> tag from the EDR_DeploymentResults.txt file to identify what version of RPM is supported. You can only proceed with patching the system when the supported RPM version is installed.

Forbidden package list error (packageInForbiddenList)

This error is caused by a package on the target, which is listed in the forbidden package list. You must remove the package from the forbidden package list to successfully run the Fixlet.

Empty solution (EmptySolution)

This error means that the resolver cannot find a solution with the given set of information. For example, the packages that are installed on the system or the packages that it is trying to install. To resolve this error, it is often better to have the system as standard as possible. Installing additional third-party software and removing packages from the base operating system can make this more difficult for the resolver to resolve all dependencies. It is suggested to move toward using the Native Tools site instead.

Issues when the custom repository is not a mirror of the vendor

When you use a custom repository that is not a mirror of the vendor site, it is possible that the default gpgcheck is being done as part of the installation. The GPG signature files might not be included in the repository. The files are not checked for authenticity and might cause the installation to fail.

To resolve this issue, ensure that when you register the endpoints in the SLE Custom Repository Management dashboard, you add `gpgcheck=0` to **Additional Fields**.

Cannot connect to the mirror server

One of the possible reasons for not being able to connect to the mirror server could be due to an authentication error. Check the `SCCPlugin.log` found in `%PROGRAM FILES%\BigFix Enterprise\BES Server\DownloadPlugins\SCCProtocol` on Windows systems, and `/var/opt/BESServer/DownloadPlugins/SCCProtocol` on Linux systems.

The log typically contains error code 401 when issue with authentication occur, as described in the sample log:

```
Searching package details...
URL: https://scc.suse.com/connect/organizations/repositories?page=1 |
STATUS: 401 Incorrect Login Credentials for
https://scc.suse.com/connect/organizations/repositories?page=1
Could not find token for authentication to mirror URL.
```

To resolve this issue, reconfigure the download plug-in and ensure that the mirror server credentials (organization credentials) is correct. You can get the mirror credentials for your organization from SUSE Customer Center or Novell Customer Center. The credentials are identical. For more information, see [Mirroring Credentials](#).

Novell account lockout

Account lockouts are common but temporary. Contact Novell Support if you get locked out of your account.

One possible reason for an account lock out is due to invalid credentials. Ensure that you use the mirror server configuration from Novell when you register or configure the download plug-in. The mirror credentials refer to the Organization Credentials listed in the in the SUSE Customer Center or Novell Customer Center. For more details, see [Mirroring Credentials](#).

Error deploying Fixlets from custom sites

The Fixlet site name is hardcoded in the relevance of the Fixlets because the relevance can only accept one value. When you deploy Fixlets from a custom site, the Fixlets would fail because they are still referencing to the original Fixlet site. To resolve this issue, ensure that your endpoints are subscribed to the original Fixlet site so that they can grab all the relevant site files.

If you do not want to stay subscribed to the original Fixlet site, but be able to deploy custom Fixlets successfully, complete the following steps:

1. Make a custom copy of the necessary site files.
2. Host the site files either in your own custom site or online.
3. Modify the custom Fixlet appropriately.

Package installation using a custom repository failed

If you get the error message: `Install Failure: zypper -n install - Error:`

Consider the following steps to troubleshoot the issue:

1. Ensure that the custom repository is enabled. To check, the **Disable custom repository support - SUSE Linux Enterprise** task (ID#16) in the Patching Support site must be relevant to the endpoint.
2. The endpoint must have the required repositories. To check, run `zypper repos`.
3. Ensure that the latest site is gathered.
4. Run a Fixlet from a site and collect the following logs when the action is completed:
 - The Client log is located at `/var/opt/BESClient/___BESData/___Global/Logs`.
 - The `EDR_DeploymentResults.txt` log is located at `/var/opt/BESClient/EDRDeployData`.
5. If the `EDR_DeploymentResults.txt` log file shows that the zypper command interprets each string after `InstallPackages.sh -f` as a package to install, check whether the `bc` package is installed on the endpoint. To check, run any of the following commands:

```
which bc
```

or

```
rpm -q bc
```

Missing prerequisite packages

Patching issues might occur when the endpoints are not installed with the necessary utility. Ensure that the zlib and zypper packages are installed on the endpoints.

Possible issues with the SCC Download Plug-in

Insufficient Permissions to Write to Cache

Symptoms: When the SCC Download Plug-in attempts to cache a package, you get the message in the download plug-in log (by default, it is located at `<BES Server Directory>\DownloadPlugins\SCCProtocol`): `ERROR : Insufficient permissions to write cache. Please check your plugin cache directory permissions.`

Causes: The BigFix Server account does not have permission to write to the directory where the download plug-in is trying to cache the repository metadata.

Resolving the problem: Check the download plug-in cache directory permissions. Make sure that the BigFix Server user ('Administrator' on Windows, 'root' on Linux) has permission to write to cache directory.

Cache Drive Does not Exist

Symptoms: When the SCC Download Plug-in attempts to cache a package, you get the message in the download plug-in log: `ERROR : Cache device not ready.`

Causes: The download plug-in cache directory is pointing to a drive that does not exist on the BigFix server.

Resolving the problem: Update the `plugin.ini` file to point to the correct cache path.

Cache Drive is Full

Symptoms: When the SCC Download Plug-in attempts to cache a package, you get the message in the download plug-in log: `ERROR : Insufficient space left on cache device.`

Causes: The drive where the cache is being written to is full.

Resolving the problem: Increase the free disk space on the cache device.

Package is not Found

Symptoms: The download plug-in log outputs the message `ERROR CODE 252: Package is not found in the reposource.`

Causes: There can be numerous possible causes for such an error, here are a few:

- Novell might have removed the package from their repository.
- The package has been superseded.

- There are metadata issues on the endpoint.
- A cross dependency exists between third-party packages.

Resolving the problem: Retrieve the EDR logs (`/var/opt/BESClient/EDRDeployData`) and client logs (`/var/opt/BESClient/___BESData/___Global/Logs`) from the endpoints, and contact HCL BigFix Support.

Download errors due to network configuration

Downloads may fail due to network configuration, such as proxy or firewall, preventing traffic through the URLs that are accessed by the SCC download plug-in or the SCC download cacher.

If you encounter such issues, check the following configuration:

- The BigFix server whitelist, `<BigFix server installation>\Mirror Server\Config\DownloadWhitelist.txt` must contain the following entry:

```
SCCProtocol://.*
```

- The following URLs must be accessible from the BigFix server, and from the endpoints running the SCC download cacher:
 - `https://scc.suse.com:443`
 - `https://updates.suse.com:443`
 - `http://sync.bigfix.com:80`

Prefetch plug-in error

If you have taken an action on a Fixlet that failed on a line with `execute prefetch plug-in` in the Actionscript. Subsequent calls to the same prefetch plug-in from any Actionscript might fail on the endpoint. The script might have been blacklisted, causing the prefetch plug-in error.

To verify, check the client log. You will see either of the following messages for the Fixlet action executing the prefetch plug-in:

```
execute prefetch plug-in' didn't complete within 300 seconds. Black listing plug-ins
matching the sha1 hash of 'name of 'bash' until agent is restarted.
```

```
Execute prefetch plug-in attempting to reuse plug-in which took too long earlier.
```

To resolve this issue, do the following actions:

1. Restart the BigFix client to clear the blacklist.
2. Set the `_BESClient_ActionManager_PrefetchPlugInTimeoutSeconds` client configuration setting with sufficient time for the patch to install and resolve dependencies. This client setting indicates how long the client should wait before blacklisting the script. You can use the **Change Timeout for Prefetch Plugins** task, available from the Patching Support site, to set the setting to 30 minutes (1800 seconds).



Note: The `_BESClient_ActionManager_PrefetchPlugInTimeoutSeconds` setting varies based on the endpoint and the Fixlet being installed. To get the desired value, take the slowest endpoint and increase the setting to a high number, such as 3,000 seconds, then run a large Fixlet and see how long it takes. You can then take that number and multiply it by two. Alternatively, set the client setting to 600 seconds and adjust it accordingly if the suggested value does not work for you.

Error when /var is mounted as noexec

All available Fixlets use an executable that by default runs directly from the `/var` directory, a partition on the endpoint. The Fixlets will not work when `/var` is set with the `noexec` option, regardless of whether the SCC Download Plug-in or Custom Repository solution is used. Therefore, ensure that the `/var` directory is not set with the `noexec` option by doing the following steps:

1. Check the client log to see if the prefetch plug-in returned the `exit code 126`.
2. Run `mount` as the root user to check the mount option that is currently used:

```
[root@host ~]# mount
/dev/mapper/vg_data-lv_root on / type ext4 (rw)
proc on /proc type proc (rw)
sysfs on /sys type sysfs (rw)
devpts on /dev/pts type devpts (rw,gid=5,mode=620)
tmpfs on /dev/shm type tmpfs (rw)
/dev/sdal on /boot type ext4 (rw,nodev)
/dev/mapper/vg_data-lv_var on /var type ext4 (rw,noexec,nosuid,nodev)
none on /proc/sys/fs/binfmt_misc type binfmt_misc (rw)
```

If `/var` is set to `noexec`, you must take one of the following actions:

- Remove the `noexec` mount option.
- Move `/var/opt/BESClient` to a different partition, which is not `noexec`, and create a symbolic link to it in its place.
- Run the **Set the path for _BESClient_LinuxPatch_executable_directory** Fixlet and specify an alternative directory to run the executable for patching. The directory path must be a valid, absolute path name. It can contain only alphanumeric characters, forward slashes, and underscores.

Null error when configuring BigFix Patch download plug-ins

When the BigFix server and the BigFix client on the BigFix server do not have the same version, users might encounter a null error. The error occurs because BigFix server 8.x and 9.x versions handle encryption differently. The version of the client on the BigFix server is used to determine the BigFix server version and it is assumed that the version is the same for the BigFix server and the client on the BigFix server.

Ensure that the version of the BigFix server and BigFix client on the BigFix server match to avoid null errors when configuring the download plug-in. At a minimum, the version must be on the same major version level, for example 8.x or 9.x.

EDR_DeploymentResults.txt reports package cannot be found

This is caused due to an outdated cache, and it needs the latest metadata. The cache gets cleared on its own after a certain period of time, but sometimes new content appears before the cache is erased automatically. You can manually clear the cache to see if the issue gets fixed.

The cache is located in the `SCC download plugin` folder. If you are using version 1.1.0.0 or higher of the SCC download plugin and would like to clear the cache on every execution, you can modify the `plugin.ini` file by adding the following lines: `[Experimental] alwaysClearCache = 1`

Appendix C. Frequently asked questions

To better understand Patch Management for SUSE Linux™ Enterprise, read the following questions and answers.

The Manage Download Plug-ins dashboard is not reflecting any data. What do I do?

Here are some steps you can do to troubleshoot the issue:

- Gather the latest **Patching Support** site.
- Activate the **Download Plug-in Versions** analysis, available from the **Patching Support** site.
- Clear the BigFix console cache.

What are superseded patches?

Superseded Fixlets are Fixlets that contain outdated packages. If a Fixlet® is superseded, then a newer Fixlet® exists with newer versions of the packages. The newer Fixlet® ID can be found in the description of the superseded Fixlet®.

How do I deal with missing patches?

HCL only provides Fixlet content for patches that are available in [Novell Patch Finder](#) and in the supported repositories. For details, see [Supported Novell repositories](#).

Is there a minimum version of Zypper to install security patches using the CVE number?

Yes, you must at least use Zypper version 1.5.3-3.2.

What packages do I need to install on the clients before patching?

The prerequisite packages that must be installed on the endpoints are zlib and zypper.

What do I do when an action reports back with an installation failure?

Check to see if the conflict is caused by a vendor-acquired package. These must be removed for the installation to occur.

I am locked out from my Novell account. What do I do?

One possible reason for an account lock out is due to invalid credentials. Ensure that you use the mirror server configuration from Novell when you register or configure the download plug-in. Account lockouts are common but temporary. Contact Novell Support if you get locked out of your account.

Why is my action reporting back as a failed download?

Make sure you update the download plug-in to the latest version and register it with the correct credentials.

The client logs contains a prefetch plug-in error that prevents the Fixlet from completing successfully. What is causing the error? What should I do?

The ActionScript that was running on the endpoint might have been blacklisted, causing the prefetch plug-in issue.

To resolve this issue, restart the BigFix client to clear the blacklist. To prevent the script from being blacklisted, set the `_BESClient_ActionManager_PrefetchPlugInTimeoutSeconds` client configuration setting with sufficient time to process the patch. For more information, see [Prefetch plug-in error \(on page 80\)](#).

I am not able to patch an Fixlets on endpoints with the `/var` directory mounted as `noexec`. What do I do?

For the workaround, see [Error when `/var` is mounted as `noexec` \(on page 81\)](#).

How do I verify if the SCC download plug-in was registered correctly?

Run a Fixlet® with an action task to verify if the download plug-in is registered correctly. Verify that the patch download is successful. Otherwise, you might need to unregister the download plug-in and register it again.

How do I register a download plug-in? Do I use the register download plug-in task or the Manage Download Plug-in dashboard?

To register a download plug-in, you must use the Manage Download Plug-in dashboard in the Patching Support site. Existing register download plug-in tasks are being deprecated. To learn more about plug-in registration, see [Registering the SUSE download plug-in](#) or [Registering the SCC download plug-in \(on page 27\)](#).



Note: You must also use the Manage Download Plug-in dashboard to unregister and configure download plug-ins. For more information about the dashboard, see the topic on Manage Download Plug-ins dashboard in the BigFix content in [HCL Knowledge Base](#).

Which file could tell me why the mirror server is not working?

To check whether the issue is due to an incorrect URL or mirror server credentials, check the `plugin.ini` file at `<BES Server directory>/DownloadPlugins/SCCProtocol`.

Can I configure the SCC Download Plug-in to only use the extended repository list?

Yes, you can by setting the `onlyUseExtendedRepoListFile` flag in the `plugin.ini` to `yes`.

I am not able to install any packages since I upgraded to the SCC Plug-in. All tasks result in the following line: `Failed add prefetch item {concatenation " ; " of lines of file (parameter "EDR_PkgRequest")}`. What is wrong?

The BigFix Enhanced Security option `-requireSHA256Downloads` or **Require SHA-256 Downloads** option in the BigFix Administration tool might be enabled. This option configures all download verification to use only the SHA-256 algorithm. The SCC download plug-in might fail due to certain SUSE repository metadata, which do not contain SHA-256 values for the packages in the repository, that are used by the plug-in.

Consider disabling the **Require SHA-256 Downloads** option to successfully deploy a patch. Security and package integrity is not compromised as another layer of checking and verification is done using the GPG signature of the package. For more information about the download option, refer to [BigFix Platform Installation Guide](#).

Where should I save the extended repository list file?

The file can be stored in any location the download plug-in has access to. You must ensure that the BigFix Server has permissions to access the location.

I have a subscription for extension products, such as the SUSE Linux Enterprise Software Developer Kit 12, can I configure the SCC Download Plug-in to access their assigned repositories?

Yes, you can. For more information, see [Extending the SCC download plug-in \(on page 36\)](#).

What happens if I edit the `DLsUSERepoList.json` file with more repositories?

The changes that you make will be deleted when BigFix refreshes the Patching Support site as the file will be overwritten.

Can I reconfigure the SCC download plug-in proxy after registration?

Yes, you can update the proxy settings and mirror credentials by configuring the download plug-in from the Manage Download Plug-ins dashboard.

Will the SCC download plug-in configuration file (`plugin.ini`) be overwritten when there is a newer version of the download plug-in?

No, the configuration file will not be overwritten. The only time the configuration file is overwritten is when the download plug-in is reconfigured.

Where can I find the log for the SCC Download Plug-in? What are the possible log levels

Logging is controlled by the `plugin.ini` file. It is located with the download plug-in executable. By default, it is located in `%PROGRAM FILES%\BigFix Enterprise\BES Server\DownloadPlugins\SCCProtocol` on Windows systems. On Linux system, it is in `/var/opt/BEServer/DownloadPlugins/SCCProtocol`. The log file is rotated on a daily basis, which means that a new log file is created and the old log file is renamed with the date that it is created from.

Can I set the log level for the SCC Download Plug-in?

You can set the download plug-in to generate log messages depending on level of information that you need.

The logging level determines the amount of detail that the SCC download plug-in writes to the log files. Set the logging level in the `%PROGRAM FILES%\BigFix Enterprise\BES Server\DownloadPlugins\SCCProtocol\plugin.ini` file.



Note: Logging level values are case-sensitive.

The following logging levels are listed in order of increasing amount of information logged:

ERROR

Contains errors related to the execution of the download plug-in, which might indicate an impending fatal error.

WARNING

Contains information about failed downloads, and reasons for failure.

INFO

Contains general information outlining the progress and successful downloads, with minimal tracing information.

DEBUG

Contains fine-grained information used for troubleshooting issues. This is the most verbose level available.



Note: Setting the logging level to DEBUG increases the amount of information to log, which might have an impact on performance. You must only increase the logging level to DEBUG when investigating an issue.

When troubleshooting, what do the exit codes mean?

Exit codes 251 and 252 require you to contact HCL BigFix Support as the nature of the issue is unexpected and might be unique to your environment. Ensure that you provide the appropriate download plug-in log from `%PROGRAM FILES%\BigFix Enterprise\BES Server\DownloadPlugins\SCCProtocol` and the deployment log from `/var/opt/BESClient/EDRDeployData`.

The other exit codes are based on the official Zypper exit codes. To view the definition, run `zypper man` from the command prompt.

Is there a way to keep the EDR logs from being deleted?

Edit the actionscrip of the Fixlet and set `debug_level` in the action to 10 to keep the logs.

An action failed and the EDR logs do not give any information about the failing action. How do I troubleshoot?

In the Fixlet action, set the `debug_level` to 10 to retrieve more information for debugging, and rerun the Fixlet.

An action failed and the logs contain Zypper-specific errors. How do I troubleshoot?

For more information about Zypper and errors that are related to it, see the Zypper documentation at <http://www.suse.com> and the Zypper-related articles in the Novell Customer Center.

What are the configuration settings that Zypper use?

The SUSE Fixlet sites use all the Zypper settings in `/etc/zypp/zypp.conf`.

The following Zypper configuration settings are set to values that come from another file, which is dynamically created during Fixlet execution:

- cachedir
- configdir
- metadatadir
- packagesdir
- reposdir

- `repo.add.probe`
- `repo.refresh.delay`
- `solvablefilesdir`

Which versions of BigFix support custom repositories for SUSE?

BigFix V8.2 and later support custom repositories for SUSE Linux Enterprise Desktop and SUSE Linux Enterprise Server versions 11 and 12.

What is a custom repository?

The term custom repository refers to any software repository that is not natively supported by the Novell Customer Center. Custom repositories give you the benefit of being able to control exactly what is in the repository. In the SLE Custom Repository Management dashboard, the term custom repository can refer to a repository or the Subscription Management Tool (SMT).

What is the purpose of a repository?

A repository is a storage location that contains a collection of packages and metadata for the available packages. These repositories can be on online servers, CDs, DVDs, or on other media.

What is SMT?

SMT stands for Subscription Management Tool. It provides a repository and registration target that is synchronized with Novell Customer Center. With the SMT, enterprise customers are able to optimize the management of SUSE Linux Enterprise software updates and subscription entitlements. For more information about SMT, see <https://www.suse.com/documentation/smt11/>.

What version of Zypper is required to use the SLE Custom Repository Management dashboard?

No minimum requirement. All Zypper versions that are used in SUSE Linux Enterprise version 11 works.

How do I create a repository?

To learn about creating repositories, see the SUSE documentation:

- *SUSE Linux Enterprise Desktop 11 Deployment Guide* at https://www.suse.com/documentation/sled11/book_sle_deployment/data/sec_y2_sw_instsource.html
- *SUSE Linux Enterprise Server 11 Deployment Guide* at https://www.suse.com/documentation/sles11/book_sle_deployment/data/sec_y2_sw_instsource.html
- *SUSE Linux Enterprise Desktop 12 Deployment Guide* at https://www.suse.com/documentation/sled-12/book_sle_deployment/data/book_sle_deployment.html
- *SUSE Linux Enterprise Server 12 Deployment Guide* at https://www.suse.com/documentation/sles-12/book_sle_deployment/data/book_sle_deployment.html

Can I reconfigure a repository that I previously configured?

Yes, you can reconfigure a previously configured repository by using the `clientSetup4SMT.sh` script. It is provided with SMT to configure endpoints to use the SMT server or to reconfigure it to use a different SMT server.

From the logs, can I tell if I am using the normal Zypper process to the SMT or repository in the log?

Yes, the log indicates if the normal Zypper process is used for either a standard repository or SMT.

What is the difference between registering a repository and importing a repository?

Use the import feature if you have existing repositories that are not included in the Repositories list in the dashboard. Use the register feature if you already have a repository in the Repository list, but you still need to link the repository with the endpoint.

What happens when the repository does not contain the package?

When a package is not found, the Fixlet fails. You can troubleshoot from `/var/opt/BESClient/EDRDeployData/EDR_DeploymentResults.txt`, which is where the Zypper output is logged.

What happens if there are issues with the custom repository solution?

You can revert to the standard BigFix server solution by running the **Disable custom repository support - SUSE Linux Enterprise** task.

How are dependencies resolved?

Dependencies are resolved by Zypper.

Are the repositories that are listed in the second table of the Endpoints tab in the SLE Custom Repository Management dashboard used in sequence?

There is no sequence in the repositories that are listed in the Endpoints tab, even if you specified the priority as an extra note when you registered the repository. When Zypper queries the repositories, the repository that first gets the fetch query replies, including the package and its dependencies.

Through the SLE Custom Repository Management dashboard, I deployed a patch by using a custom repository that is not a mirror of the vendor site. The deployment action failed and the logs indicate that the files cannot be opened. What must I do?

When you use a custom repository that is not a mirror of the vendor site, it is possible that the default gpgcheck is being done as part of the installation. The GPG signature files might not be included in the repository. The files are not checked for authenticity and might cause the installation to fail. To resolve this issue, ensure that when you register the endpoints in the SLE Custom Repository Management dashboard, you add `gpgcheck=0` to **Additional Fields**.

Can I install several custom packages using the installation tasks?

Yes, you can install several custom packages with the available tasks. Use a space to separate the package names.

Is bandwidth throttling available in a custom repository architecture?

Bandwidth throttling is not supported in a custom repository architecture because it is outside the BigFix infrastructure.

I tried deploying Fixlets from a custom site, but it failed. Why is that? What should I do?

The Fixlet site name is hardcoded in the relevance of the Fixlets because the relevance can only accept one value. Therefore, if you want to deploy custom Fixlets, ensure that your endpoints are subscribed to the original Fixlet site so that they can grab all the relevant site files.

If you do not want to stay subscribed to the original Fixlet site but be able to deploy custom Fixlets successfully, complete the following steps:

1. Make a custom copy of the necessary site files.
2. Host the site files either in your own custom site or online.
3. Modify the custom Fixlet appropriately.

How can I install custom packages that are on the custom repository?

You can use the **Install packages by using Zypper** task that is in the **Patching Support** site.

For more information, see [Installing packages from a custom repository \(on page 69\)](#).

If I update Zypper to 1.5.3-3.2 or later on SUSE Linux Enterprise 11.0, can I install patches using the CVE number?

Yes, if you are using zypper-1.5.3-3.2 then you can install patches using the CVE number.

What versions of SUSE Linux Enterprise are supported in the SLE Custom Repository Management dashboard?

The SLE Custom Repository Management dashboard supports SUSE Linux Enterprise Desktop and Linux Enterprise Server versions 11 and 12.

For SUSE Linux Enterprise 12, why do I need to unregister the repository or SMT before registering an endpoint to a new SMT?

The new registration information does not overwrite the old registration information for SUSE Linux Enterprise 12, hence you must unregister the endpoint by using the SLE Custom Repository Management dashboard before registration.

For SUSE Linux Enterprise 12, do I need to delete any files before registering an endpoint to a new SMT?

You must delete the following files if you do not use the SLE Custom Repository Management dashboard when unregistering the endpoints:

- `/etc/SUSEConnect`
- `/etc/zypp/credentials.d/*`

Can I perform a rollback on systems with mixed file systems such as ext3 and btrfs?

The **SLE Btrfs Snapshot Management** dashboard supports Btrfs file systems only. Mixed files systems such as `.ext3` and btrfs cannot be rolled back.

Where can I find information about the Exclude `/var/opt/BESClient/*` Directory From Snapshots task?

The log file is located in the directory `/etc/snapper/filters/logfiles.txt`.

Which log can I use to troubleshoot the snapshot rollback feature?

Use the `snapper_rollback.log` file located in the directory `var/opt/BESClient/EDRDeployData`.

Which directories need to be excluded from the snapshots to enable rollback?

To enable the rollback feature from the **SLE Btrfs Snapshot Management** dashboard, the `/var/opt/BESClient/*` directories must not be included when taking snapshots.

Where can I find more information about snapshots?

See the SUSE Documentation at https://www.suse.com/documentation/sles11/book_sle_admin/data/cha_snapper.html.

SUSE Linux Enterprise 12 endpoints are not displayed in the SLE Btrfs Snapshot Management dashboard. Why is that?

The agents for SUSE Linux Enterprise Server or Desktop version 12 are currently available only in BigFix V9.2. Ensure that you are using the specified version.

The baseline that I ran with the multiple-package installation task completed successfully, but why does it still show as relevant.

It might be due to the Fixlet components that failed to install the packages with broken dependencies. The **Multiple-Package Baseline Installation** task, by default, ignores broken dependencies to allow packages without dependency issues to successfully be applied on the target endpoint.

I ran a baseline with the Multiple-Package Baseline Installation task. How can I view the list of Fixlets that failed in that baseline?

You can monitor of the overall progression of the deployment of the baseline and view the status of each sub-action in detail by using the **View Action Info** dialog.

To access this dialog:

1. Click the **Action** icon in the navigation tree.
2. Select an action in the Actions List Panel.
3. Select the **Computers** tab in the Work Area.
4. Right-click any computer in the list.
5. Either select **Show Action Info** from the context menu or select **Show Action Info** from the **Edit** menu.

For more details about the failed Fixlets, check the client log on the target endpoints at `/var/opt/BESClient/___BESData/___Global/Logs`.

When deploying multiple Fixlets in a baseline, is it possible to skip the broken dependencies and continue with the installation for the rest of the packages?

The **Multiple-Package Baseline Installation** task skips packages with broken dependencies whenever possible. Packages with dependency issues with a SUSE product, such as SLED-12-0.x86_64, cannot be skipped. Another scenario where packages are not skipped is when dependency errors occur during installation, as indicated by the following error message: `File conflicts happen when two packages`

attempt to install files with the same name but different contents. In such cases, the installation is canceled and no patches will be installed on the endpoints.

What are the possible causes of failure using the multiple-package baseline installation method?

The Fixlets might have failed to install due to the following reasons:

- A custom site contained multiple baselines with the multiple-package baseline installation task running at the same time.
- Two or more Fixlets required an update to multiple versions of the same package.
- Two or more Fixlets required an update to the same package dependencies.
- A Fixlet was immediately deployed after a baseline ran the multiple-package installation method. Not enough time was allowed to complete all zypper transactions and refresh the status on the endpoints for the multiple-package installation.
- The zypper tool have not been patched, but a SUSE release package is included in the baseline.
- The **Enable the Multiple-Package Baseline Installation feature** task must be in the same baseline as the rest of the content. It should be added before the patch Fixlets and multiple-package installation tasks.
- The Multiple-Package Baseline Installation feature only works when both the enable and installation tasks exist in the same baseline. For more information, see [Installing multiple packages in a baseline \(on page 58\)](#).
- The **Enable the Multiple-Package Baseline Installation feature** task must be added after any of these cleanup tasks: **Delete SUSE 11 Package List File for Multiple-Package Baseline Installation** or **TROUBLESHOOTING: SUSE 11 Patching Deployment Logs - Cleanup**.
- The installation task with the correct SUSE distribution, operating system version, service pack level, and architecture must be added at the end of the baseline.

My endpoints are on air-gapped environment, how should I configure BigFix to patch these endpoints?

For air-gapped environments, ensure to mirror the supported SUSE repositories that host the packages needed to patch the endpoints. To do this, use the SCC download cacher to build the local repository on a location which the BigFix server has access to. This location is known as the local cache.



Note: The local cache must contain all the required repositories to avoid dependency resolution issues.

Configure the download plug-in configuration file, `plugin.ini`, to use the local cache when downloading files during deployment. Follow these steps:

1. Set the local cache configuration, `localCache`, to the location of the files that were downloaded using the download cacher tool.



Note: This location must be accessible to the BigFix server.

2. Set the `localCacheOnly` flag to `yes`. to download files from the download cache only and not from the vendor site.

What to do when Fixlets fail to install with the following message in the EDR log? "Warning: Nothing to install. Please check if you are using the latest kernel."

This message appears only in case of Fixlets that deploy kernel packages. A kernel Fixlet becomes relevant if the endpoint does not have the target kernel package installed or if the endpoint's active kernel is at a lower version than the target kernel package. An endpoint is still considered subject to kernel vulnerabilities even if it has the latest kernel installed but not using it actively.

To remediate the issue, restart the endpoint and ensure it is using the latest kernel available.

Notices

This information was developed for products and services offered in the US.

HCL may not offer the products, services, or features discussed in this document in other countries. Consult your local HCL representative for information on the products and services currently available in your area. Any reference to an HCL product, program, or service is not intended to state or imply that only that HCL product, program, or service may be used. Any functionally equivalent product, program, or service that does not infringe any HCL intellectual property right may be used instead. However, it is the user's responsibility to evaluate and verify the operation of any non-HCL product, program, or service.

HCL may have patents or pending patent applications covering subject matter described in this document. The furnishing of this document does not grant you any license to these patents. You can send license inquiries, in writing, to:

HCL

330 Potrero Ave.

Sunnyvale, CA 94085

USA

Attention: Office of the General Counsel

For license inquiries regarding double-byte character set (DBCS) information, contact the HCL Intellectual Property Department in your country or send inquiries, in writing, to:

HCL

330 Potrero Ave.

Sunnyvale, CA 94085

USA

Attention: Office of the General Counsel

HCL TECHNOLOGIES LTD. PROVIDES THIS PUBLICATION "AS IS" WITHOUT WARRANTY OF ANY KIND, EITHER EXPRESS OR IMPLIED, INCLUDING, BUT NOT LIMITED TO, THE IMPLIED WARRANTIES OF NON-INFRINGEMENT, MERCHANTABILITY OR FITNESS FOR A PARTICULAR PURPOSE. Some jurisdictions do not allow disclaimer of express or implied warranties in certain transactions, therefore, this statement may not apply to you.

This information could include technical inaccuracies or typographical errors. Changes are periodically made to the information herein; these changes will be incorporated in new editions of the publication. HCL may make improvements and/or changes in the product(s) and/or the program(s) described in this publication at any time without notice.

Any references in this information to non-HCL websites are provided for convenience only and do not in any manner serve as an endorsement of those websites. The materials at those websites are not part of the materials for this HCL product and use of those websites is at your own risk.

HCL may use or distribute any of the information you provide in any way it believes appropriate without incurring any obligation to you.

Licensees of this program who wish to have information about it for the purpose of enabling: (i) the exchange of information between independently created programs and other programs (including this one) and (ii) the mutual use of the information which has been exchanged, should contact:

HCL

330 Potrero Ave.

Sunnyvale, CA 94085

USA

Attention: Office of the General Counsel

Such information may be available, subject to appropriate terms and conditions, including in some cases, payment of a fee.

The licensed program described in this document and all licensed material available for it are provided by HCL under terms of the HCL Customer Agreement, HCL International Program License Agreement or any equivalent agreement between us.

The performance data discussed herein is presented as derived under specific operating conditions. Actual results may vary.

Information concerning non-HCL products was obtained from the suppliers of those products, their published announcements or other publicly available sources. HCL has not tested those products and cannot confirm the accuracy of performance, compatibility or any other claims related to non-HCL products. Questions on the capabilities of non-HCL products should be addressed to the suppliers of those products.

Statements regarding HCL's future direction or intent are subject to change or withdrawal without notice, and represent goals and objectives only.

This information contains examples of data and reports used in daily business operations. To illustrate them as completely as possible, the examples include the names of individuals, companies, brands, and products. All of these names are fictitious and any similarity to actual people or business enterprises is entirely coincidental.

COPYRIGHT LICENSE:

This information contains sample application programs in source language, which illustrate programming techniques on various operating platforms. You may copy, modify, and distribute these sample programs in any form without payment to HCL, for the purposes of developing, using, marketing or distributing application programs conforming to the application programming interface for the operating platform for which the sample programs are written. These examples have not been thoroughly tested under all conditions. HCL, therefore, cannot guarantee or imply reliability, serviceability, or function of these programs. The sample programs are provided "AS IS," without warranty of any kind. HCL shall not be liable for any damages arising out of your use of the sample programs.

Each copy or any portion of these sample programs or any derivative work must include a copyright notice as follows:

© (your company name) (year).

Portions of this code are derived from HCL Ltd. Sample Programs.

Trademarks

HCL Technologies Ltd. and HCL Technologies Ltd. logo, and hcl.com are trademarks or registered trademarks of HCL Technologies Ltd., registered in many jurisdictions worldwide.

Adobe, the Adobe logo, PostScript, and the PostScript logo are either registered trademarks or trademarks of Adobe Systems Incorporated in the United States, and/or other countries.

Java and all Java-based trademarks and logos are trademarks or registered trademarks of Oracle and/or its affiliates.

Microsoft, Windows, Windows NT, and the Windows logo are trademarks of Microsoft Corporation in the United States, other countries, or both.

Linux is a registered trademark of Linus Torvalds in the United States, other countries, or both.

UNIX is a registered trademark of The Open Group in the United States and other countries.

Other product and service names might be trademarks of HCL or other companies.

Terms and conditions for product documentation

Permissions for the use of these publications are granted subject to the following terms and conditions.

Applicability

These terms and conditions are in addition to any terms of use for the HCL website.

Personal use

You may reproduce these publications for your personal, noncommercial use provided that all proprietary notices are preserved. You may not distribute, display or make derivative work of these publications, or any portion thereof, without the express consent of HCL.

Commercial use

You may reproduce, distribute and display these publications solely within your enterprise provided that all proprietary notices are preserved. You may not make derivative works of these publications, or reproduce, distribute or display these publications or any portion thereof outside your enterprise, without the express consent of HCL.

Rights

Except as expressly granted in this permission, no other permissions, licenses or rights are granted, either express or implied, to the publications or any information, data, software or other intellectual property contained therein.

HCL reserves the right to withdraw the permissions granted herein whenever, in its discretion, the use of the publications is detrimental to its interest or, as determined by HCL, the above instructions are not being properly followed.

You may not download, export or re-export this information except in full compliance with all applicable laws and regulations, including all United States export laws and regulations.

HCL MAKES NO GUARANTEE ABOUT THE CONTENT OF THESE PUBLICATIONS. THE PUBLICATIONS ARE PROVIDED "AS-IS" AND WITHOUT WARRANTY OF ANY KIND, EITHER EXPRESSED OR IMPLIED, INCLUDING BUT NOT LIMITED TO IMPLIED WARRANTIES OF MERCHANTABILITY, NON-INFRINGEMENT, AND FITNESS FOR A PARTICULAR PURPOSE.